

Surveillance Working together to strengthen implementation

The CPM agreed for an increased emphasis on surveillance in the next several years. This will take place through an Implementation Pilot Programme on Surveillance, which will be a coordinated effort with active participation from contracting parties and RPPOs. These efforts will build on the efforts made since your participation in the IRSS survey on ISPM 6 (Surveillance) in 2012.

The regional IPPC Workshop are an opportunity to share experience with surveillance activities such as: current status, upcoming plans, and successes and challenges of surveillance activities within your country.

Please submit this complete form in advance of the workshop and prepare a five-minutes presentation on current and upcoming (next 2-5 years) of surveillance activities.

Your name : Dr. Antarjo Dikin (Director of Plant Quarantine and Bio-safety, Indoensia Agriculture Quarantine Agency)

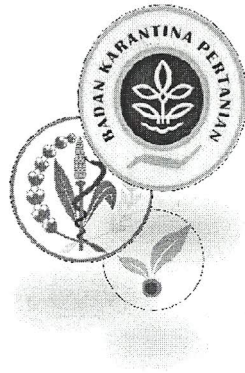
Country name: Indonesia

Surveillance : An official process which collects and records data on pest presence or absence by survey, monitoring or other procedures (ISPM 5)

| No | Question | Answer |
|----|---|--|
| 1. | What general surveillance activities take place in your country? (General surveillance is a process whereby information on particular pests which are of concern for an area is gathered from many sources, wherever it is available and provided for use by the NPPO-ISPM 6) | <ul style="list-style-type: none">• Update information resources (references) such as CABI, etc• Subscribe international journals on plant pest and diseases• Use local government data of plant pest and diseases based on recent surveillance• Confirm recent research report on plant and diseases issued by researches agencies or universities |
| 2. | What specific surveillance programmes (detection, delimiting or monitoring surveys for specific pests) take place in your country? (Specific surveys are procedures by which NPPOs obtain information in pests of concern on specific sites in an area over a defined period of time – ISPM 6) | <ul style="list-style-type: none">• Specific survey is carried out once a year routinely• Survey is focused on plant that have economic value or plant as source of major food |
| 3. | What current or upcoming surveillance projects, workshop or improvements are planned in your country for the next five years? Please include surveillance projects of any kind (for example funded domestically, through regional or | <ul style="list-style-type: none">• Development of survey methodology by combined with information technology• Competency improvement by training and increase cooperation with other agencies |

| | | |
|----|--|--|
| | international programs, etc). Plan to present this information at the workshop in 5 minutes or less so we can exchange ideas and updates in the region | <ul style="list-style-type: none"> Involved in regional training workshop on plant pest surveillance |
| 4. | What resources do you have to share related to surveillance (manual, standard operating procedures, public outreach material, etc)? Please list and identify if you are willing to share them | <ul style="list-style-type: none"> Develop survey manual/ guidelines Increase in pest detection and identification by training Increase coordination with related local government, research agencies and universities |
| 5. | What do you think would help to address the challenges your country has with surveillance programs? | <ul style="list-style-type: none"> Propose increase the budget in order to survey can be conducted at least twice a year (in dry season and rainy season) Need more time (day) in conducting survey in order to get real actual conditions |

Indonesia Agriculture Quarantine Agency Surveillance Management



*Center of Plant Quarantine & Bio-Safety
Indonesia Agriculture Quarantine Agency*

Regulation

- Law No. 16 /1992: Animal, Fish & Plant Quarantine;
- Gov. Regulation No. 14 /2002: Plant Quarantine;
- Decree of the Minister of Agriculture No. 93/2011: Plant Quarantine Pest List;
- ISPM No. 6 Guidelines for Surveillance.
- ISPM No. 8 Determination of Pest Status in an Area
- ISPM No. 17 Pest Reporting

Indonesia Agriculture Quarantine Agency
Center of Plant Quarantine and Bio-safety



Purposes

- Detection & monitoring of Quarantine Pest distribution in Indonesia;
- Review for Indonesia Quarantine Pest List
- Specific survey is carried out once a year routinely
- Survey is focused on plant that have economic value or plant as source of major food

Indonesia Agriculture Quarantine Agency
Center of Plant Quarantine and Bio-safety



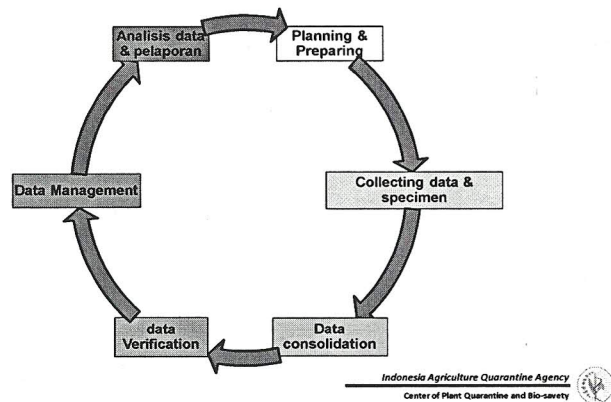
Implementation

- Specific survey is carried out each year routinely;
- Survey is focused on plant that have economic value or plant as source of major food;
- Conduct by 50 Plant Quarantine Services in Indonesia.

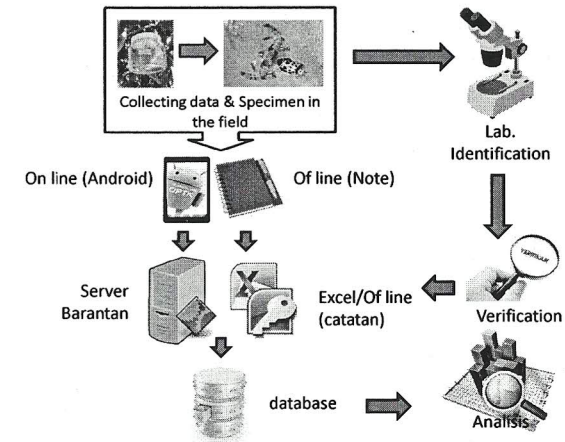
Indonesia Agriculture Quarantine Agency
Center of Plant Quarantine and Bio-safety



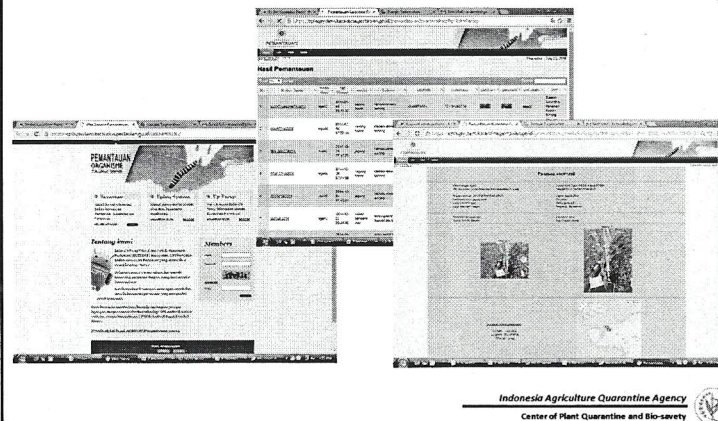
Surveillance Management



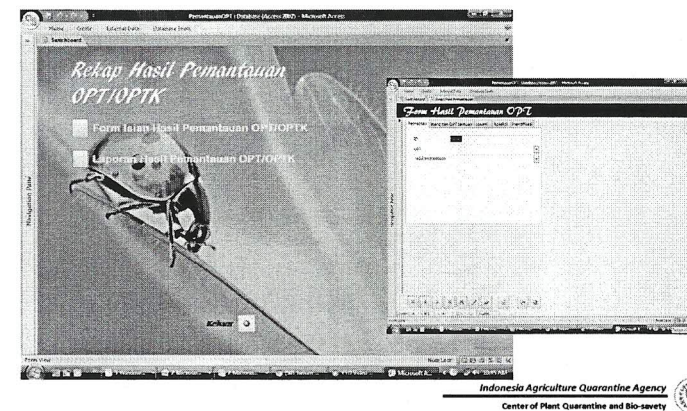
Surveillance Data flow



Surveillance database (on line)



Surveillance database (off line)



Thank You