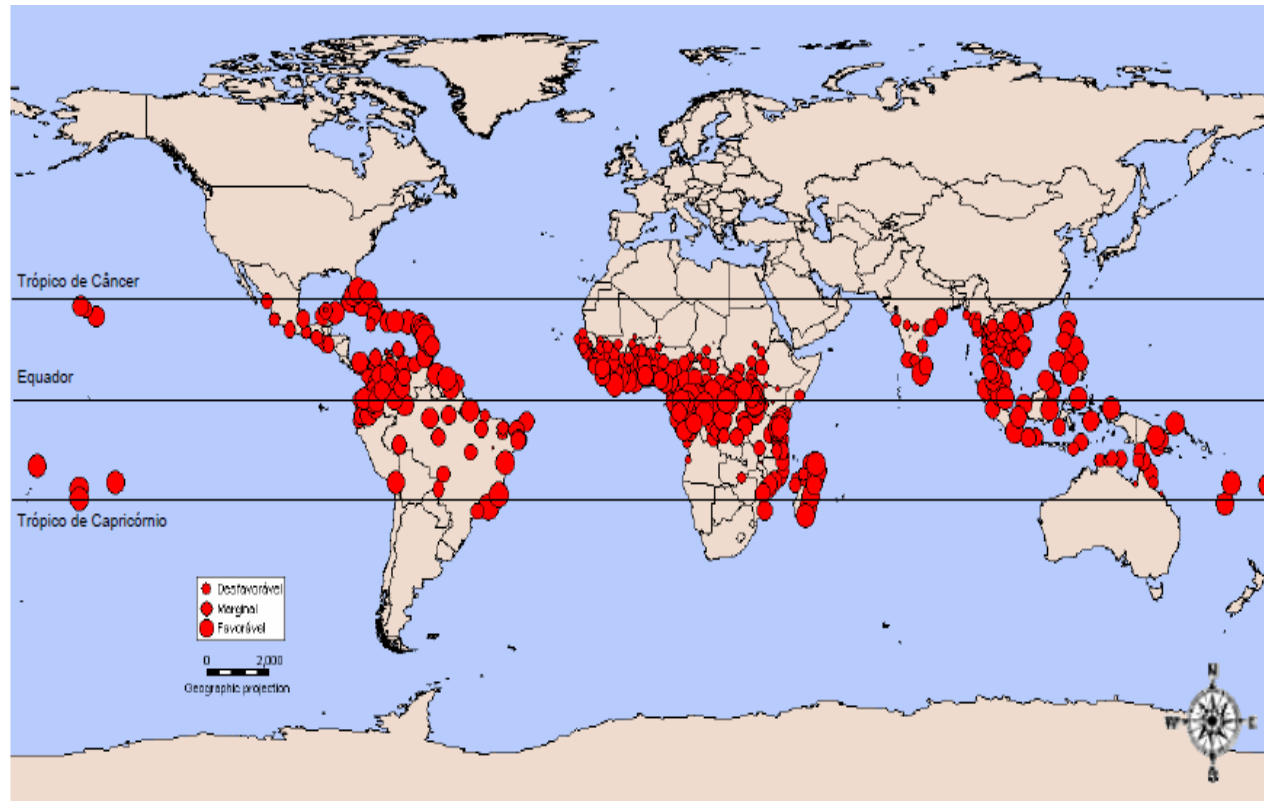


SALB surveillance system to maintain PFA



YUSOF
OTHMAN

PRESENTATION OUTLINES

- ▶ INTRODUCTION
- ▶ PFA IN ISPM 4
- ▶ SURVEILLANCE SYSTEM IN ISPM 6
- ▶ ORGANIZING A SURVEILLANCE IMPLEMENTATION
- ▶ RECORDING A SURVEY RESULTS FOR PFA
- ▶ SHARING OF INFORMATION

INTRODUCTION

- ▶ SALB is a disease of rubber that is the most destructive, spread rapidly, expensive and difficult to control
- ▶ Experiences in Surinam, Panama, Costa Rica and Brazil indicated that SALB can cause serious problem within 6-7 years after planting
- ▶ Presently, the diseases spread from Brazil to Mexico including Bolivia, Colombia, Peru, Venezuela, Guyana, Surinam, French Guiana, Trinidad & Tobago, Haiti, Panama, Costa Rica, Nicaragua, Salvador, Honduras, Guatemala and Belize
- ▶ Africa and Asia is free from SALB but need to provide evident that these areas is free

ISPM 4 provides elements on the requirements for the establishment and use of pest-free areas (PFAs)

- As a risk management option for phytosanitary certification of plants, plant products and other regulated articles exported from the PFA
- To support the scientific justification for phytosanitary measures taken by an importing country for protection of an endangered PFA

Provisions of Pest Free Area

- ▶ **the export of plants, plant products and other regulated articles without the need for application of additional phytosanitary measures when PFA requirements are met**
- ▶ **as an element in pest risk assessment, the confirmation on a scientific basis of the absence of a stated pest from an area.**

PFA- DEFINATION

- ▶ An area in which a specific pest does not occur
- ▶ Demonstrated by scientific evidence and this condition is being officially maintained

Three types of PFA

- ▶ Entire country - SALB
- ▶ Uninfested part of a country in which a limited infested area is present
- ▶ Uninfested part of a country situated within a generally infested area.

Establishment and Maintaining PFA

Establishment

1. systems to establish pest freedom
2. phytosanitary measures to maintain pest freedom
3. checks to verify pest freedom has been maintained

Methods used to achieve these components may include:

1. data assembly
2. surveys (delimiting, detection, monitoring)
3. regulatory controls
4. audit (review and evaluation)
5. documentation (reports, work plans)

System to establish PFA

General Surveillance for source of data

- ▶ scientific and trade journals
- ▶ unpublished historical data
- ▶ contemporary observations

Specific Surveillance

- ▶ Detection and delimiting survey - 21 Steps

Phytosanitary Measure to PFA

Phytosanitary measures to maintain freedom

- ▶ Inclusion on a **quarantine pest list**
- ▶ **Import** requirements
- ▶ **Restriction of the movement** of certain products within areas of a country or countries
- ▶ Routine **monitoring**
- ▶ Extension advice to producers

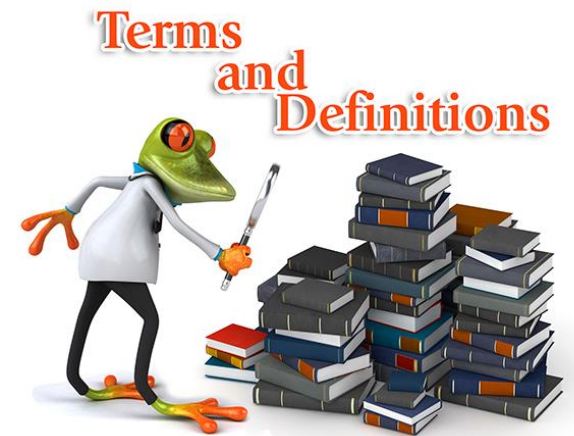
Checks to Guarantee Freedom has been Maintained

For verification and internal management, the continuing pest free status should be checked after the PFA has been established and phytosanitary measures for maintenance have been put in place.

- ▶ Ad hoc inspection of exported consignments
- ▶ Requirement that researchers, advisers or inspectors notify the NPPPO of any occurrences of the pest
- ▶ **Monitoring** surveys

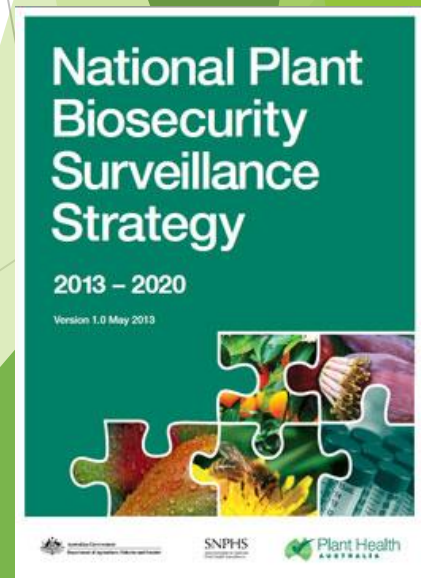
ISPM6 - Surveillance System

- ▶ Surveillance is defined by ISPM 6 as:
 - ❖ An official process which collects and records data on pest occurrence or absence by survey, monitoring or other procedures
- ▶ A survey is defined as:
 - ❖ An official procedure conducted over a defined period of time to determine the characteristics of a pest population or to determine which pest species occur in an area.



Purpose of Surveillance

- To develop a list of pests or hosts present in an area
- **To demonstrate area freedom (the absence of a particular pest in an area) or places of low pest prevalence for trade purposes**
- To develop a baseline list of pests prior to ongoing monitoring for changes in pest status
- For pest management and control
- For early detection of exotic pests
- For early detection of established organisms becoming pests
- To delimit the full extent of a pest following an incursion
- To monitor progress in a pest eradication campaign



Type of Survey

▶ Detection survey:

- *Survey conducted in an area to determine if pests are present'*

▶ Delimiting survey:

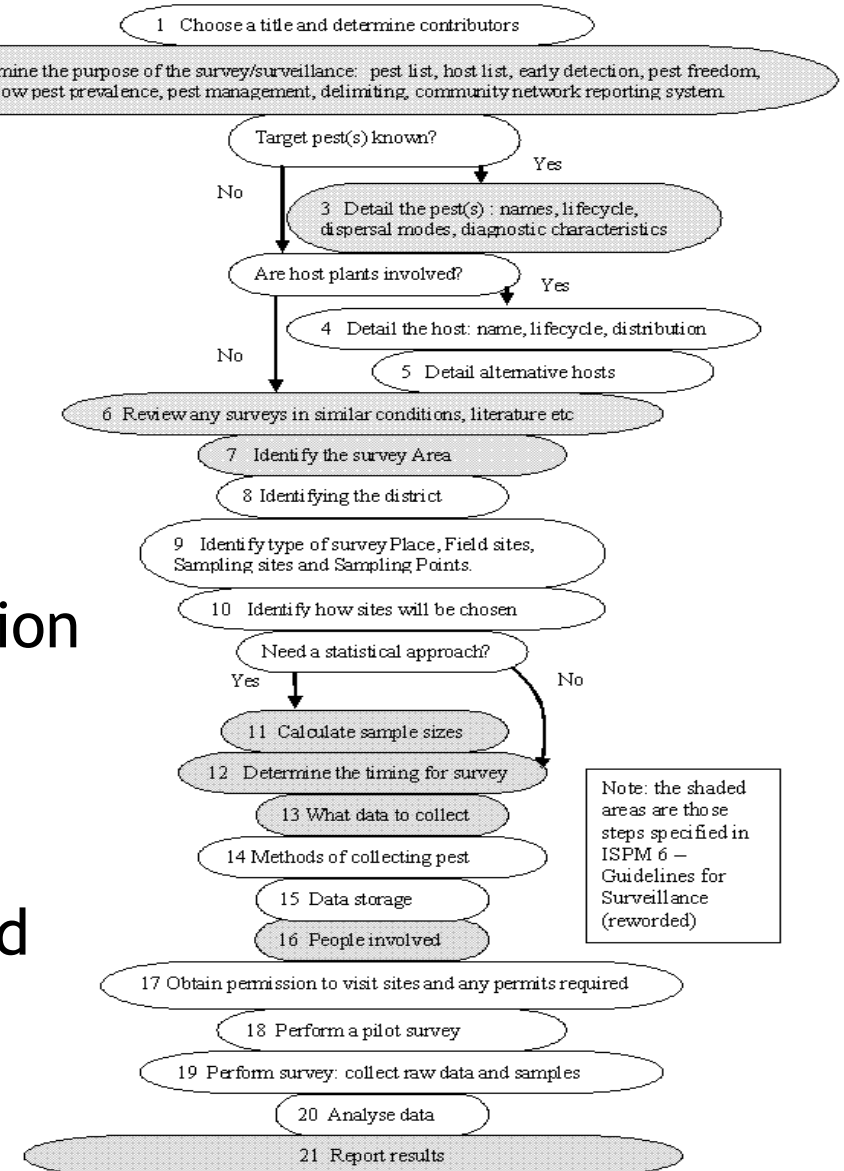
- *Survey conducted to establish the boundaries of an area considered to be infested by or free from a pest'*

▶ Monitoring survey:

- *Ongoing survey to verify the characteristics of a pest population*

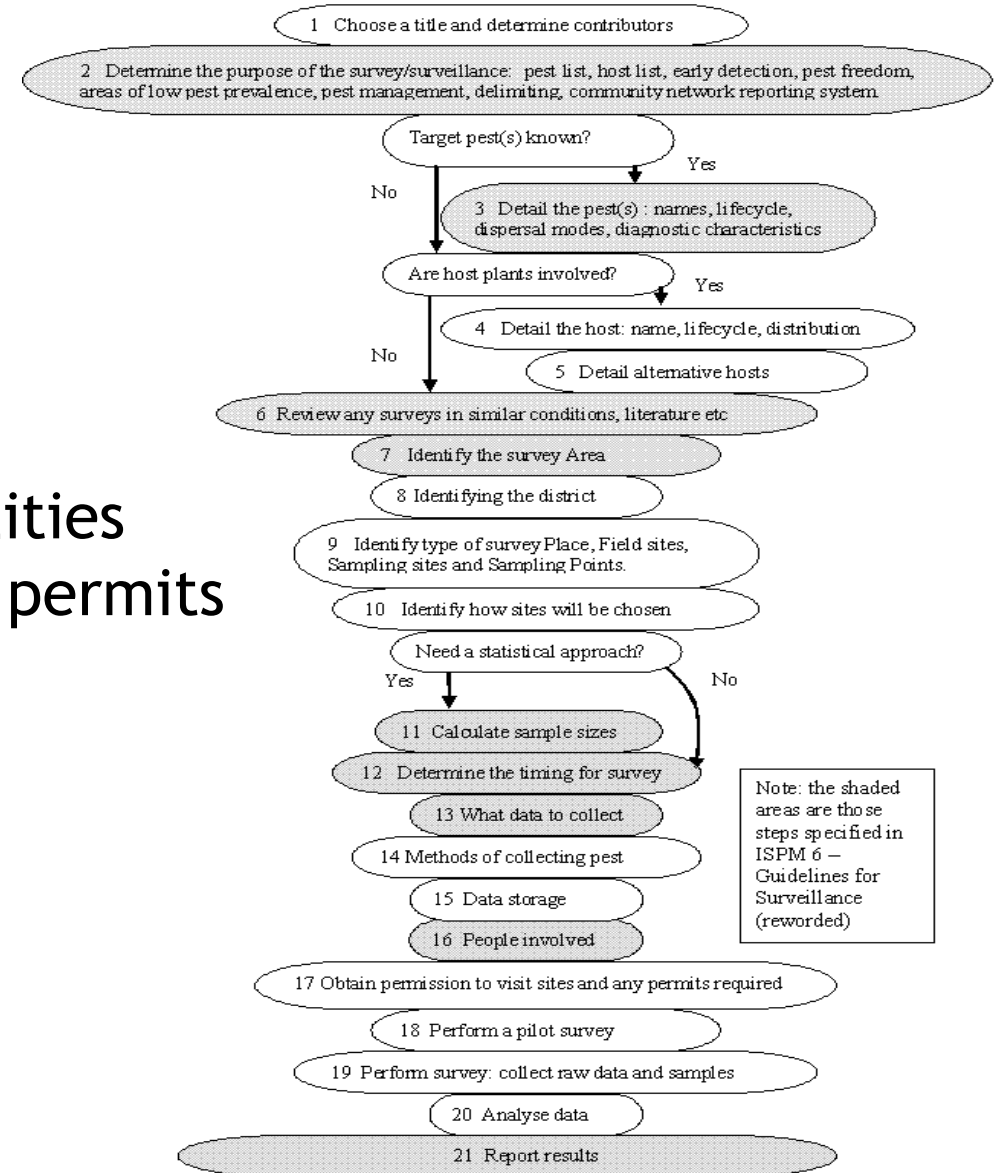
ORGANIZING A SUREVILLANCE IMPLEMENTATION

1. Write the title and recording authors, people responsible
2. Reasons for survey
3. Identify and understand target pest
4. Identify hosts of target pest
5. Identify alternate hosts of target pest
6. Review of previous surveys and survey plans
7. Record the Area on climate, topography, location coordinates
8. Record the District - identify and provide coordinates or define
9. Record characteristics of places, field sites and sampling sites.
10. Identify how sites will be chosen
11. Sample size



ORGANIZING A SURE VILLANCE IMPLEMENTATION

12. Determine timing
13. Determine what data to collect
14. Collecting methods
15. Data Management approach
16. Personnel involved -role and responsibilities
17. Obtain permission to visit sites and any permits required
18. Perform pilot survey
19. Perform full-scale survey
20. Analysed data
21. Report Results



RECORDING A SURVEY RESULTS FOR PFA

- ▶ Identity of pest (scientific name)
- ▶ Date of report
- ▶ Hosts(s)
- ▶ Status under ISPM 8 (e.g. ‘present’, ‘absent’, ‘transient’)
- ▶ Geographical distribution (including map, if appropriate)
- ▶ Nature of immediate or potential danger, or other reason for reporting
- ▶ Reporting should be performed without ‘undue delay’
- ▶ If all information is not available, a preliminary report should be made and later updated as further information becomes available
- ▶ Reporting should not be confidential

Documentation and Review PFA

The establishment and maintenance of a PFA should be adequately documented and periodically reviewed with regard to:

- data assembled to establish PFA
- phytosanitary regulations applied
- technical details of surveillance systems used
- various administrative measures taken in support of the PFA
- delimitation of the PFA

REPORTING OBLIGATION

- ▶ ISPM 17. Pest reporting (2002)
- ▶ Obligation [International Plant Protection Convention Article VIII.1(a)] to report occurrence, outbreak and spread of pests that may be of immediate or potential danger to other contracting parties
- ▶ Reporting enables countries to adjust their phytosanitary import requirements and actions to take into account changes in pest risk
- ▶ Countries may be required by trading partners to provide pests lists, evidence of area freedom etc.
- ▶ Countries may optionally make other pest reports - satisfies general recommendations of Convention
- ▶ NPPOs should make provision to ensure collection, verification and analysis of domestic reports

Thank You

