
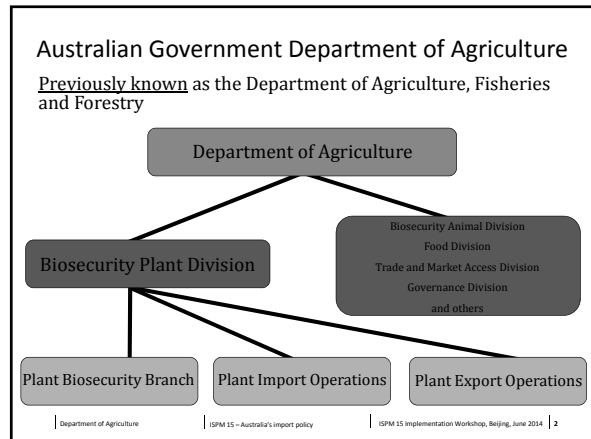


Australian Government
Department of Agriculture

ISPM 15 – Australia’s import policy



Dr Chris Howard
Policy Officer
Biosecurity Plant Division
Australian Government Department of Agriculture
ISPM 15 Implementation Workshop, Beijing, June 2014



Australia’s international obligations

Australia is a member of the WTO and signatory to the IPPC.

Trade operates under the SPS agreement and associated international standards.

SPS agreement - sovereign right of any member country to impose phytosanitary measures above those detailed in the ISPMs.

Technical justification is required.

Department of Agriculture | ISPM 15 – Australia’s import policy | ISPM 15 Implementation Workshop, Beijing, June 2014 | 3

Australia’s adoption of ISPM 15

Australia adopted ISPM 15 in 2004.

Pre 2004 - Australia had stringent requirements for wood packaging:

- Total bark freedom
- Fumigation - MeBr, SO₂F₂, EtO
- Heat treatment
- Irradiation
- Permanent timber preservative treatments

Present - together with ISPM 15, non-ISPM 15 WPM is still accepted provided it has had a certified treatment.

Department of Agriculture | ISPM 15 – Australia’s import policy | ISPM 15 Implementation Workshop, Beijing, June 2014 | 4

Recent revisions to Australian ISPM 15 policy

Bark tolerance


- Australia maintained a policy of total bark freedom while it considered the 2009 revision of ISPM 15.
- After review, Australia’s insistence on bark freedom was relaxed in 2010 and the revised standard was adopted.

Department of Agriculture | ISPM 15 – Australia’s import policy | ISPM 15 Implementation Workshop, Beijing, June 2014 | 5

Recent revisions to Australian ISPM 15 policy

Blue Stain Fungi (BSF)

2008 - BSF on wood packaging was routinely being detected on ISPM 15-certified wood packaging during border inspections.



Department of Agriculture | ISPM 15 – Australia’s import policy | ISPM 15 Implementation Workshop, Beijing, June 2014 | 6


Blue Stain Fungi

Caused by dematiaceous fungi that infect the sapwood of trees.

Staining usually occurs after felling.

Several morphologically similar fungal genera are associated with Blue Stain:

- *Ophiostoma*, *Ceratocystis*, *Leptographium*, & a few others.
- All characterised by long-necked perithecia.



Department of Agriculture | ISPM 15 – Australia's import policy | ISPM 15 Implementation Workshop, Beijing, June 2014 | 7

Blue Stain Fungi


Caused by dematiaceous fungi that infect the sapwood of trees.

Staining usually occurs after felling.

Several morphologically similar fungal genera are associated with Blue Stain:

- *Ophiostoma*, *Ceratocystis*, *Leptographium*, & a few others.
- All characterised by long-necked perithecia.

Some BSF-related species are known pathogens.



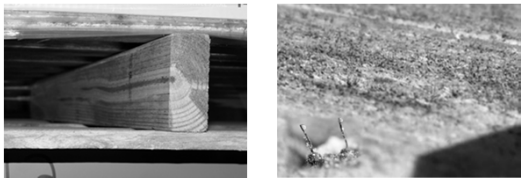
Department of Agriculture | ISPM 15 – Australia's import policy | ISPM 15 Implementation Workshop, Beijing, June 2014 | 8

Recent revisions to Australian ISPM 15 policy

Blue Stain Fungi (BSF)

2008 - BSF on wood packaging was routinely being detected on ISPM 15-certified wood packaging during border inspections.

Plant Import Operations sought advice about what to do when BSF is detected.



Department of Agriculture | ISPM 15 – Australia's import policy | ISPM 15 Implementation Workshop, Beijing, June 2014 | 9

Recent revisions to Australian ISPM 15 policy

Blue Stain Fungi (BSF)

2008 - BSF on wood packaging was routinely being detected on ISPM 15-certified wood packaging during border inspections.

Plant Import Operations sought advice about what to do when BSF is detected.

Interim advice –

ISPM 15-certified wood packaging should be treated, re-exported or destroyed when active BSF detected (when perithecia were observed).

Pathogenic fungi within the BSF complex + the debatable effectiveness of ISPM 15 treatments for fungi.

Department of Agriculture | ISPM 15 – Australia's import policy | ISPM 15 Implementation Workshop, Beijing, June 2014 | 10

Recent revisions to Australian ISPM 15 policy

Blue Stain Fungi (BSF)

2012 - Plant Biosecurity reviewed the current policy about active blue stain fungi on ISPM 15 wood packaging.

Department of Agriculture | ISPM 15 – Australia's import policy | ISPM 15 Implementation Workshop, Beijing, June 2014 | 11

Blue Stain of Wood Packaging

Issues considered during BSF policy review:

- Poor knowledge of what species of BSF Australia has – native or established exotics.
- Morphological identification time consuming.
- Molecular methods reliant on accurate databases.
- Experts agree that without importation of vector, wood packaging is not a pathway for BSF (IFQRG 2011).
 - Unknown what role native bark beetles may play.
- How WPM is targeted for inspection.

Department of Agriculture | ISPM 15 – Australia's import policy | ISPM 15 Implementation Workshop, Beijing, June 2014 | 12

Recent revisions to Australian ISPM 15 policy

Blue Stain Fungi (BSF)

2012 - Plant Biosecurity reviewed the current policy about active blue stain fungi on ISPM 15 wood packaging.

Australia determined that the risk of BSF was acceptable and no further intervention was required.

Targeting BSF on wood packaging was unduly trade restrictive.

Summary

Australia accepts ISPM 15-certified WPM and other WPM if treated according to appropriate import conditions.

During border surveillance operations, non compliant WPM will be treated, reexported, or destroyed.

Adopting ISPM 15 and other schemes for WPM allows resources at the Australian border to be directed to other areas of greater risk.