



AANZFTA Economic cooperation work programme (AANZFTA ECWP)  
Workshop on Bacterial wilt of corn (*Pantoea stewartii stewartii*) Diagnostic Protocol  
6 – 8 November 2012  
At Center for Agricultural Biotechnology, Kamphaeng Saen, Thailand

Hosted by: Australian Government Overseas Aid Program (AusAID), Department of Agriculture, THAILAND and Center for Agricultural Biotechnology

































AANZFTA Economic cooperation work programme (AANZFTA ECWP)  
Workshop on Bacterial wilt of corn (*Pantoea stewartii*  
*stewartii*) Diagnostic Protocol

6 – 8 November 2012

At Center for Agricultural Biotechnology, Kasetsart University, Bangkok, Thailand

Hosted by: Australian Government AusAID Program (AusAID) and the Ministry of Agriculture, THAILAND (Ministry of Agriculture)







# Delimiting- to establish of pest free areas for production site

**Target pests:**

*Xanthomonas axonopodis* pv. *citri*

**Host:**

Pomelo: *Citrus maxima*





# **Canker Free Pomelo for Export to The Netherlands**

**Thailand is one of the major agricultural product exporters worldwide. Among the famous fruit crops exported pomelo (*Citrus maxima*) is one of them which was exported to many country, but unfortunately that Thai pomelo was not able to export to EU according to EU Council Directive 2000/29/EC on citrus canker caused by *Xanthomonas axonopodis* pv. *citri*.**



# Meeting with Pomelo orchard owner in Wiang Kaen, Chiang Rai province









*To explain the importance of canker disease,  
and canker-free pomelo production  
for export to the Netherlands*





Symptoms of citrus canker disease





Inspector team

**Survey for the establishment pest free production sites.**





**Citrus canker disease surveys in Pummelo orchards  
in Wiang Kaen, Chiang Rai Province**







**Inspection of exported consignment by visually surveying areas every 60 days**



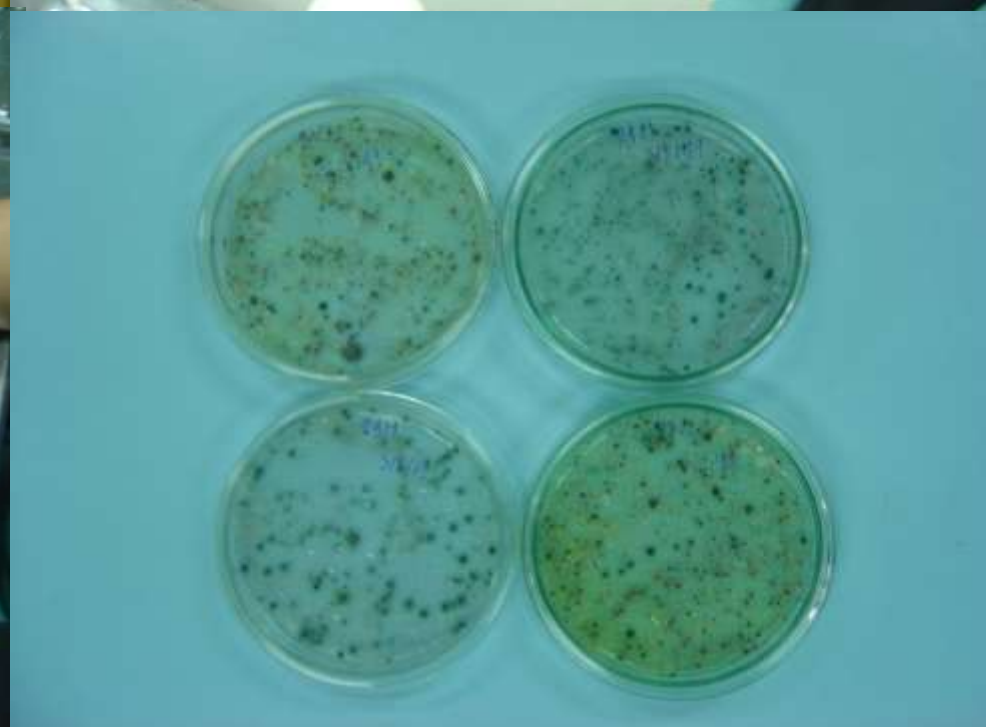








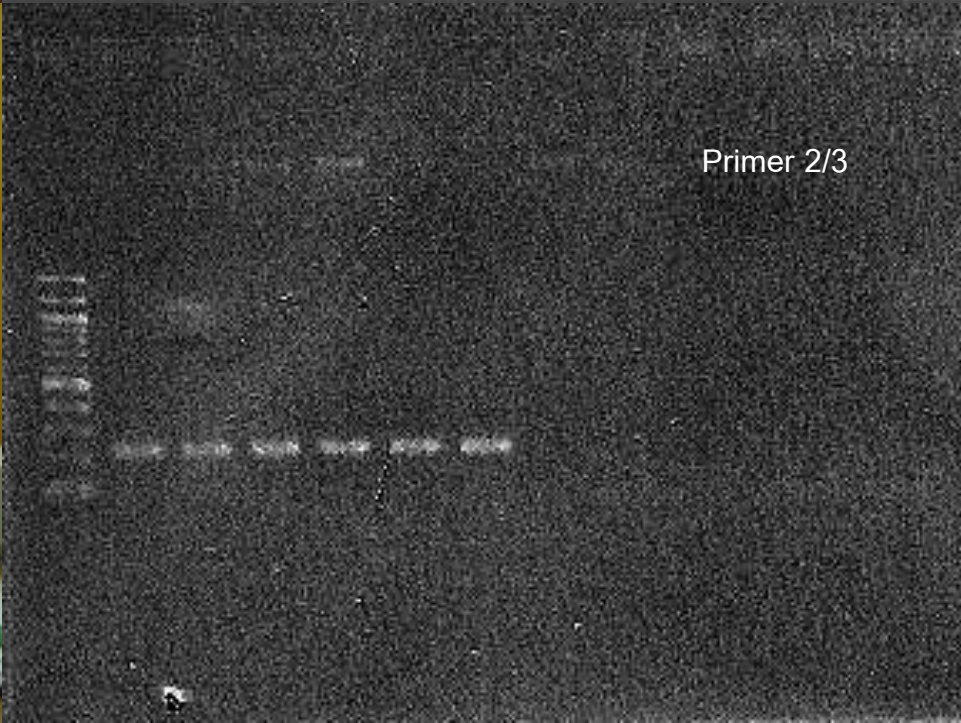
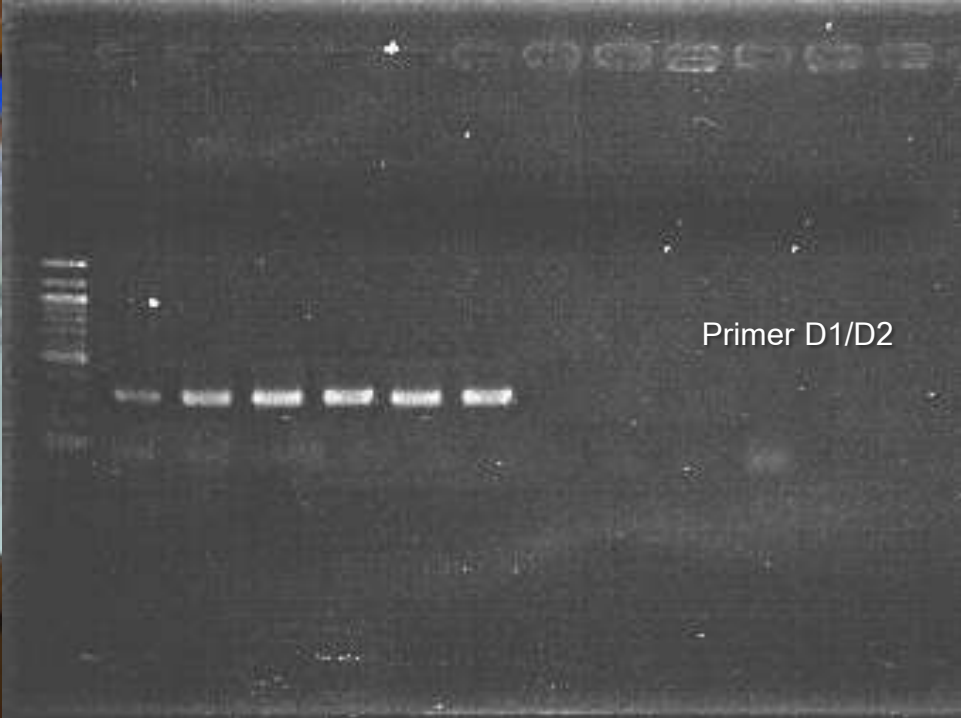
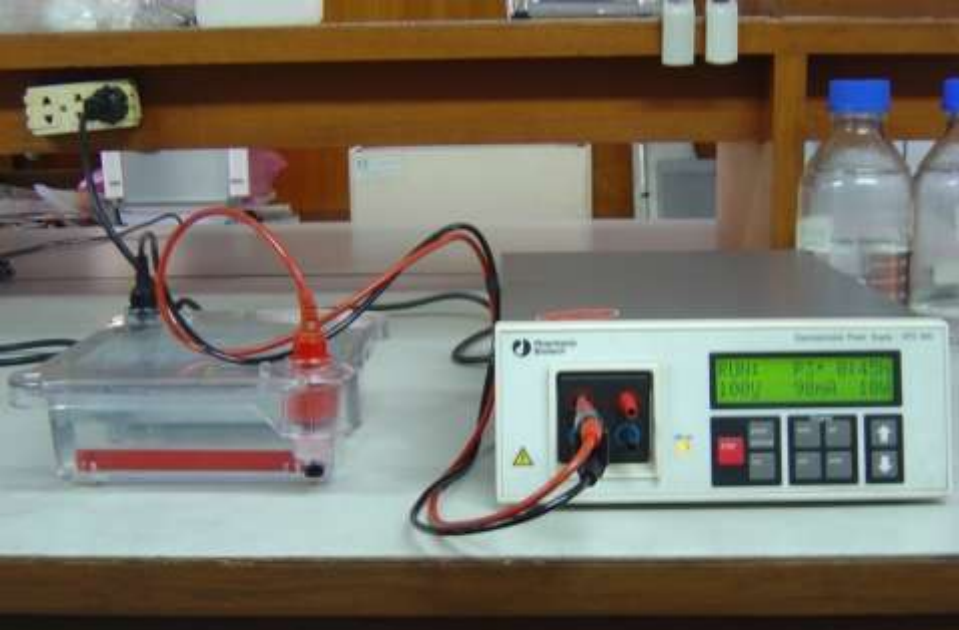
## Detection method















**At the packing house**







**Every fruit must be inspected and treated with 2 % chlorine solution for 2 minutes under supervision of DOA officer**







*Thai Pomelo*





**exported consignment**

