

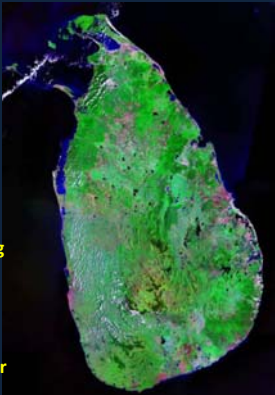
## Country report on South American Leaf Blight



Mr. Gamini de Silva  
Dr. (Mrs.) T.H.P. Sarojini Fernando

## Rubber Plantation Industry in Sri Lanka - 2010


	Estates	Small holdings
Planted Area 125645 (ha)	46250	79395
Producers (%)	38	62
Production	111.2 X 10 <sup>3</sup> MT	



- \* Rubber is grown in almost the entire wet zone in Sri Lanka.
- \* Presently the cultivation is being extended into the intermediate zone, higher altitudes & dry zone of the country.
- \* The present extent of land under rubber 125,645 ha

### Rubber Production

8<sup>th</sup> position in the world



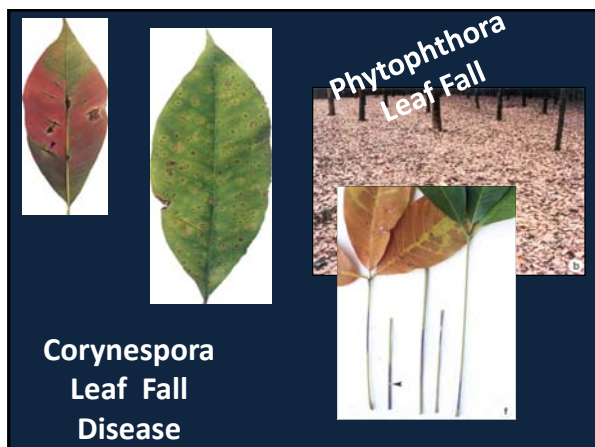
### Economically Important Foliar Diseases of Rubber

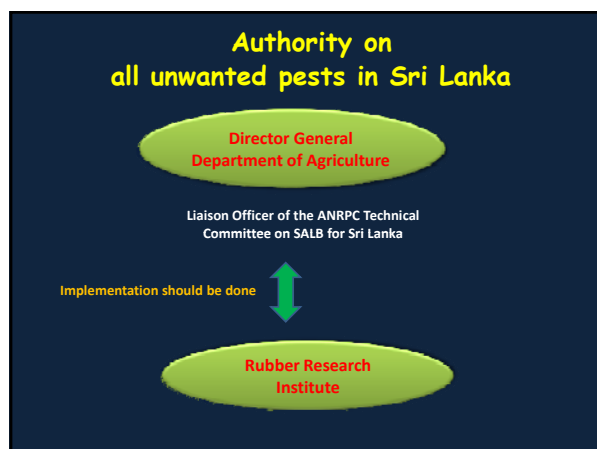


### Economically Important Diseases of Rubber

#### Leaf Diseases

- Powdery Mildew – *Oidium heveae*
- Colletotrichum Leaf Disease – *Colletotrichum* spp
- Phytophthora Leaf Fall  
*Phytophthora palmivora*
- Corynespora Leaf Fall Disease  
*Corynespora cassiicola*





**Available Expertise**

Department of Agriculture

Director (SCPPC) Seed Certification & Plant Protection Centre	01	Post-graduate in Agriculture & Science
Deputy Director National Plant Quarantine Service	01	
Deputy Director Plant Protection Service	01	
Technical Officers	05	

**Available Expertise**

Rubber Research Institute of Sri Lanka

Additional Director	01	Post-graduate in Agriculture & Science
Plant Pathologists	03	
Technical Staff	06	

**Facilities Available**

**Rubber Research Institute of Sri Lanka**

Plant Pathology & Microbiology Department - Laboratories

Tests can be performed

- Cultural and Morphological tests
- Molecular based test methods

Dr. Gamini Seneviratne  
Director,  
RRISL  
E mail: dirrrisltnet.lk

Dr (Mrs.) THPS Fernando  
Plant Pathologist  
RRISL  
E mail: thpsfernando@yahoo.com

## Facilities Available

### Department of Agriculture

National Plant Quarantine Service – (NPQS) Laboratories  
Plant Protection Service

#### Tests can be performed

- Cultural and Morphological tests,
- Serological tests
- Molecular based test methods



#### Contact Person

Director  
SCPPC,  
Department of Agriculture, Gannoruwa  
Tel 0094 81 2384226  
Email : spreaptraining@yahoo.com

Deputy Director  
NPQS  
Katunayake  
Tel : 0094 71 4463404  
E mail:

## Past Activities

- Training programmes for the local officers  
Seminars / workshops at regional level
- Public Awareness programmes
- Leaflets & Advisory circulars to educate the stakeholders
- Video presentations on the history, biology, diagnosis and the management of the disease
- Posters to improve the awareness of the general public on the threat of this towards the rubber plantation industry
- Publications on the history, biology, diagnosis and the management of the disease to educate the scientific community



## Available Training Materials

- Experts
- Leaflets
- Handouts and presentations from the previous international training programmes
- VCD's / DVD's

## Future Plans

- Conduct a meeting in collaboration with DOA and the RRISL for relevant Officers
- Collaborative work with DOA/ NPPO / RRISL to develop a media campaign
- Re activate and strengthen NPPO
- Upgrading the available training materials

## Future Plans

- Public Awareness programmes to educate the threat of this disease contaminating the country
- Distribution of the Video presentation on SALB among the local stakeholders to educate them
- Posters to improve the awareness of the general public on the threat of this pathogen towards the rubber plantation industry
- Improvement of the diagnostic methods to facilitate the early diagnosis

## Suggestions

Trainings on practical aspects would  
Provide more opportunities for  
Our future work





