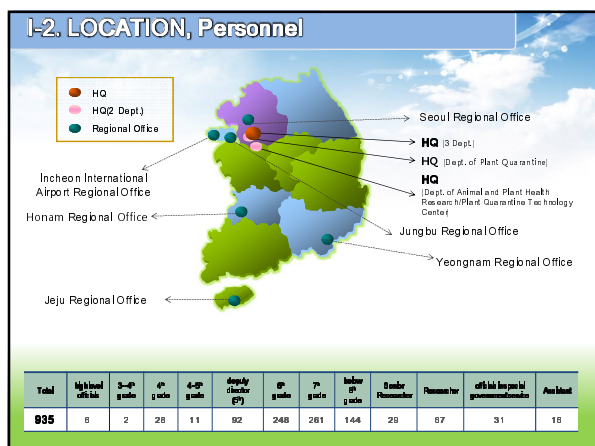
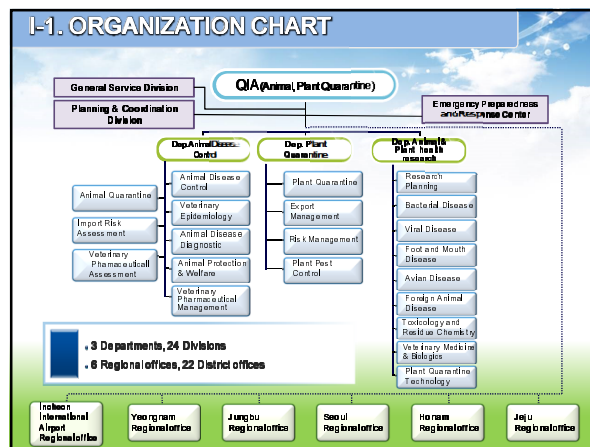
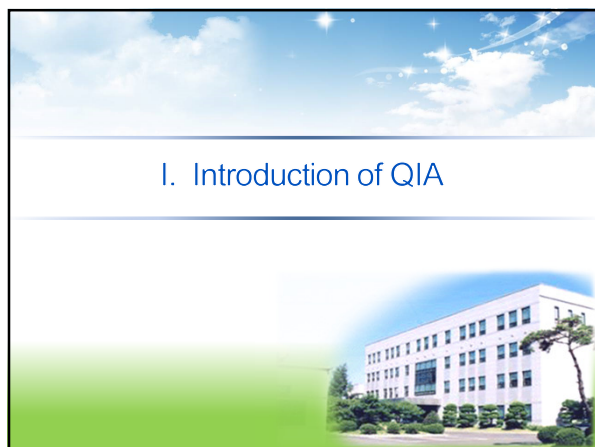




## CONTENTS

- I. Introduction of QIA
- II. E-Certification in Korea
- III. Relevant Regulations
- IV. Plans for Revision
- V. Plans for the Future





### III-1. Plant Protection Act in Korea



- 1 ACT,
- 1 Enforcement Ordinance,
- 1 Enforcement Regulation,
- 71 Notifications,
- 15 Established rules,
- 5 Official Orders

### III-2. PHYTOSANITARY CERTIFICATE

- A **phytosanitary** certificate shall be required to import plants
- The form of certificate prescribed by the IPPC and issued by a government authority
- Cases where no phytosanitary certificate is required
  - No government authority responsible for plant quarantine
  - Hand luggage mail or house-moving goods from other countries
  - Importing wood or bamboo
  - Importing prohibited items in accordance with the Act
  - Provided that they are not plants for planting without foreign exchange
  - The customs sell by public auction
  - Processed plants using high heat dry, grinding, compression or freezing
  - Exported plants rejected and re-shipped

### III-3. Standards for Application of Validity of PC

- A phytosanitary certificate should contain the following information standardized by the IPPC
  - Certificate number
  - Plant Protection Organization
  - To: Plant Protection Organization of
  - Name and address of exporter
  - Declared name and address of consignee
  - Number and description of packages
  - Place of origin
  - Name of produce and quantity declared
  - Stamp of organization
  - Name of authorized officer and signature
  - Date

### III-4. Challenges

- There are no relevant regulations
  - It is necessary to establish and revise the relevant law and regulations in order to operate the e-Certification system.

## IV. Plans for Revision



### IV-1. Reasons for Revision of the Law

- To allow use of e-Phyto
  - IPPC revision of ISPM 12
- To ensure practical use of the e-certification
  - Successful test operation since 2010
- To revise the law to approve use of e-Certificate
  - Approve use of both hard-copy PC and e-Phyto
- To increase the reliability of quarantine service
  - Document fraud prevention
- To expedite customs clearance
  - Improvement of user convenience

