



Australian Government
Department of Agriculture

Electronic Certification System (E-cert)

E-cert Interface Specification

Version 1.5

Issue date: 28 February 2014



Revision History

Date	Version	Description	Author
4 Mar 2005	1.0	Initial Version	Greg Rothwell
14 Mar 2005	1.1	Updated sentence in Section 1.1 that describes the Production Environment.	Greg Rothwell
23 Mar 2005	1.2	Fixed error in diagram on page 25.	Greg Rothwell
18 Dec 2007	1.3	Applied new formatting as per AQIS standards	Greg Rothwell
29 Oct 2008	1.4	Add a parameter (certificate status) to download method	Peter Pi
28 Feb 2014	1.5	Department of Agriculture rebranding: new formatting, changes to URLs and email addresses (for DAFF rebranding). Add UN XML examples.	Annette Dean

Table of Contents

1	INTERFACES PROVIDED BY E-CERT	4
1.1	E-CERT XML SCHEMA	4
1.2	E-CERT ENVIRONMENTS	4
2	E-CERT WEBSITE	5
3	E-CERT SOAP INTERFACE	6
3.1	WEB SERVICE DEFINITION	6
3.2	E-CERT SOAP WEB SERVER METHODS	11
3.2.1	<i>DownloadCertificates</i>	11
3.2.2	<i>AcknowledgeResults</i>	15
3.2.3	<i>GetCertificateData</i>	16
3.2.4	<i>AcknowledgeReceiptOf</i>	19
3.2.5	<i>UpdateCertificateStatus</i>	20
3.3	ERROR MESSAGES RETURNED BY THE E-CERT SOAP WEB SERVER METHODS	21
4	E-CERT SMTP INTERFACE	23
4.1	CONFIGURATION DETAILS	23
4.2	E-CERT MESSAGE CONVERSATION	23
4.3	E-CERT MESSAGE CONVERSATION USING UN E-CERT SCHEMA	23
4.3.1	<i>SPSCertificate message</i>	23
4.3.2	<i>SPSAcknowledgement message to change a status</i>	24
4.3.3	<i>SPSAcknowledgement message to accept or reject a message</i>	25
4.3.4	<i>SPSAcknowledgement message to acknowledge a message</i>	26
4.3.5	<i>E-cert message flow</i>	31
4.4	E-CERT MESSAGE CONVERSATION USING E-CERT 2.8 SCHEMA	32
4.4.1	<i>certificate message</i>	32
4.4.2	<i>revision message</i>	32
4.4.3	<i>processing_status message</i>	34
4.4.4	<i>receipt message</i>	37
4.4.5	<i>E-cert message flow</i>	40

1 Interfaces provided by E-cert

The E-cert application offers import authorities three methods, or interfaces, to access the electronic export certificates stored in the E-cert database. The three interfaces are

- The E-cert website. This interface allows the import authorities to view export certificates through an internet browser like Microsoft Internet Explorer or Firefox.
- The E-cert SOAP interface. This interface provides a web service interface allowing importing countries to automate the download of certificate data into their own import clearance systems.
- The E-cert SMTP interface. This interface involves SMTP messages being emailed between export and import authorities allowing automated transfer of certificate information.

This document provides details of the latter two interfaces: the E-cert SOAP interface and the E-cert SMTP interface.

1.1 E-cert XML Schema

Please refer to the UN/CEFACT XML schemas for SPSCertificate and SPSAcknowledgement definitions (http://www.unece.org/cefact/xml_schemas/index). The XML format of a Department of Agriculture export certificate is defined by SPSCertificate. The SPSAcknowledgement message is used for replaced and revoked certificates and as part of a SMTP conversation for acknowledging certificates or changing the status of a certificate.

For importing countries that use the old E-cert schema (version 2.8), please refer to the E-cert Data Specification document.

1.2 E-cert Environments

The E-cert interfaces are provided in two different environments:

- Test environment. This provides an environment where the Department of Agriculture and import authorities can test any new development work. The export certificates provided in this environment contain test data that may bear little resemblance to actual export certificates.
- Production environment. This environment provides access to actual export certificates issued by the department.

2 E-cert Website

The E-cert website allows import authorities to view and update Department of Agriculture export certificates via an internet browser.

The URLs for the E-cert website in the two environments are detailed in the following table.

Production environment	https://apps.daff.gov.au/ecert
Test environment	https://appstest.daff.gov.au/ecert

3 E-cert SOAP Interface

The E-cert system offers a web service interface allowing importing countries to automate the inclusion of the Department of Agriculture E-cert certificates into their own import management system. The web service interface is exposed via a SOAP (Simple Object Access Protocol) interface. This SOAP interface complies with SOAP 1.1 Technical Recommendations (<http://www.w3.org/TR/SOAP>) and Web Service Description Language (WSDL) 1.1 specification (<http://www.w3.org/TR/wsdl>).

Calls through the SOAP interface will be SSL (Secure Sockets Layer) protected. The statelessness of the SOAP protocol means that credentials (that is login ID and password) will be passed in with calls that require them. Login ID and password are provided by the E-cert Administrator.

For security, the password needs to be changed every thirty days through the E-cert website.

3.1 Web Service Definition

A description of the E-cert SOAP web service can be found at the URLs detailed in the table below.

Production environment <https://apps.daff.gov.au/ecertsoap/ecertsoap.asmx>

Test environment <https://appstest.daff.gov.au/ecertsoap/ecertsoap.asmx>

The WSDL for the E-cert web service can be displayed using the **Service Description** link provided on the pages listed in the table above. The WSDL is also included below.

```
<?xml version="1.0" encoding="utf-8"?>
<wsdl:definitions
  xmlns:s="http://www.w3.org/2001/XMLSchema"
  xmlns:soap12="http://schemas.xmlsoap.org/wsdl/soap12/"
  xmlns:http="http://schemas.xmlsoap.org/wsdl/http/"
  xmlns:mime="http://schemas.xmlsoap.org/wsdl/mime/"
  xmlns:tns="http://aqis.gov.au/ecertsoap/"
  xmlns:soap="http://schemas.xmlsoap.org/wsdl/soap/"
  xmlns:tm="http://microsoft.com/wsdl/mime/textMatching/"
  xmlns:soapenc="http://schemas.xmlsoap.org/soap/encoding/"
  targetNamespace="http://aqis.gov.au/ecertsoap/"
  xmlns:wsdl="http://schemas.xmlsoap.org/wsdl/">
<wsdl:types>
  <s:schema elementFormDefault="qualified"
    targetNamespace="http://aqis.gov.au/ecertsoap/">
    <s:element name="GetCertificateData">
      <s:complexType>
        <s:sequence>
          <s:element minOccurs="0" maxOccurs="1" name="login" type="s:string" />
          <s:element minOccurs="0" maxOccurs="1" name="password" type="s:string" />
          <s:element minOccurs="0" maxOccurs="1" name="certificateNumber"
            type="s:string" />
        </s:sequence>
      </s:complexType>
    </s:element>
    <s:element name="GetCertificateDataResponse">
      <s:complexType>
```

```

    <s:sequence>
      <s:element minOccurs="0" maxOccurs="1" name="GetCertificateDataResult"
type="s:string" />
    </s:sequence>
  </s:complexType>
</s:element>
<s:element name="AcknowledgeReceiptOf">
  <s:complexType>
    <s:sequence>
      <s:element minOccurs="0" maxOccurs="1" name="login" type="s:string" />
      <s:element minOccurs="0" maxOccurs="1" name="password" type="s:string" />
      <s:element minOccurs="0" maxOccurs="1" name="certificateNumber"
type="s:string" />
    </s:sequence>
  </s:complexType>
</s:element>
<s:element name="AcknowledgeReceiptOfResponse">
  <s:complexType />
</s:element>
<s:element name="AcknowledgeResults">
  <s:complexType>
    <s:sequence>
      <s:element minOccurs="0" maxOccurs="1" name="login" type="s:string" />
      <s:element minOccurs="0" maxOccurs="1" name="jobTicket" type="s:string" />
    </s:sequence>
  </s:complexType>
</s:element>
<s:element name="AcknowledgeResultsResponse">
  <s:complexType />
</s:element>
<s:element name="DownloadCertificates">
  <s:complexType>
    <s:sequence>
      <s:element minOccurs="0" maxOccurs="1" name="login" type="s:string" />
      <s:element minOccurs="0" maxOccurs="1" name="password" type="s:string" />
      <s:element minOccurs="0" maxOccurs="1" name="statuscodes" type="s:string" />
    </s:sequence>
  </s:complexType>
</s:element>
<s:element name="DownloadCertificatesResponse">
  <s:complexType>
    <s:sequence>
      <s:element minOccurs="0" maxOccurs="1" name="DownloadCertificatesResult"
type="s:string" />
      <s:element minOccurs="0" maxOccurs="1" name="jobTicket" type="s:string" />
    </s:sequence>
  </s:complexType>
</s:element>
<s:element name="UpdateCertificateStatus">
  <s:complexType>
    <s:sequence>
      <s:element minOccurs="0" maxOccurs="1" name="login" type="s:string" />
      <s:element minOccurs="0" maxOccurs="1" name="password" type="s:string" />
      <s:element minOccurs="0" maxOccurs="1" name="certificateNumber"
type="s:string" />
      <s:element minOccurs="0" maxOccurs="1" name="newStatus" type="s:string" />
      <s:element minOccurs="0" maxOccurs="1" name="reason" type="s:string" />
    </s:sequence>
  </s:complexType>
</s:element>

```

```
</s:sequence>
</s:complexType>
</s:element>
<s:element name="UpdateCertificateStatusResponse">
  <s:complexType />
</s:element>
</s:schema>
</wsdl:types>
<wsdl:message name="GetCertificateDataSoapIn">
  <wsdl:part name="parameters" element="tns:GetCertificateData" />
</wsdl:message>
<wsdl:message name="GetCertificateDataSoapOut">
  <wsdl:part name="parameters" element="tns:GetCertificateDataResponse" />
</wsdl:message>
<wsdl:message name="AcknowledgeReceiptOfSoapIn">
  <wsdl:part name="parameters" element="tns:AcknowledgeReceiptOf" />
</wsdl:message>
<wsdl:message name="AcknowledgeReceiptOfSoapOut">
  <wsdl:part name="parameters" element="tns:AcknowledgeReceiptOfResponse" />
</wsdl:message>
<wsdl:message name="AcknowledgeResultsSoapIn">
  <wsdl:part name="parameters" element="tns:AcknowledgeResults" />
</wsdl:message>
<wsdl:message name="AcknowledgeResultsSoapOut">
  <wsdl:part name="parameters" element="tns:AcknowledgeResultsResponse" />
</wsdl:message>
<wsdl:message name="DownloadCertificatesSoapIn">
  <wsdl:part name="parameters" element="tns:DownloadCertificates" />
</wsdl:message>
<wsdl:message name="DownloadCertificatesSoapOut">
  <wsdl:part name="parameters" element="tns:DownloadCertificatesResponse" />
</wsdl:message>
<wsdl:message name="UpdateCertificateStatusSoapIn">
  <wsdl:part name="parameters" element="tns:UpdateCertificateStatus" />
</wsdl:message>
<wsdl:message name="UpdateCertificateStatusSoapOut">
  <wsdl:part name="parameters" element="tns:UpdateCertificateStatusResponse" />
</wsdl:message>
<wsdl:portType name="EcertSOAPSsoap">
  <wsdl:operation name="GetCertificateData">
    <wsdl:input message="tns:GetCertificateDataSoapIn" />
    <wsdl:output message="tns:GetCertificateDataSoapOut" />
  </wsdl:operation>
  <wsdl:operation name="AcknowledgeReceiptOf">
    <wsdl:input message="tns:AcknowledgeReceiptOfSoapIn" />
    <wsdl:output message="tns:AcknowledgeReceiptOfSoapOut" />
  </wsdl:operation>
  <wsdl:operation name="AcknowledgeResults">
    <wsdl:input message="tns:AcknowledgeResultsSoapIn" />
    <wsdl:output message="tns:AcknowledgeResultsSoapOut" />
  </wsdl:operation>
  <wsdl:operation name="DownloadCertificates">
    <wsdl:input message="tns:DownloadCertificatesSoapIn" />
    <wsdl:output message="tns:DownloadCertificatesSoapOut" />
  </wsdl:operation>
  <wsdl:operation name="UpdateCertificateStatus">
    <wsdl:input message="tns:UpdateCertificateStatusSoapIn" />
```



```
<wsdl:output message="tns:UpdateCertificateStatusSoapOut" />
</wsdl:operation>
</wsdl:portType>
<wsdl:binding name="EcertSOAPSsoap" type="tns:EcertSOAPSsoap">
  <soap:binding transport="http://schemas.xmlsoap.org/soap/http" />
  <wsdl:operation name="GetCertificateData">
    <soap:operation soapAction="http://aqis.gov.au/ecertsoap/GetCertificateData"
style="document" />
    <wsdl:input>
      <soap:body use="literal" />
    </wsdl:input>
    <wsdl:output>
      <soap:body use="literal" />
    </wsdl:output>
  </wsdl:operation>
  <wsdl:operation name="AcknowledgeReceiptOf">
    <soap:operation soapAction="http://aqis.gov.au/ecertsoap/AcknowledgeReceiptOf"
style="document" />
    <wsdl:input>
      <soap:body use="literal" />
    </wsdl:input>
    <wsdl:output>
      <soap:body use="literal" />
    </wsdl:output>
  </wsdl:operation>
  <wsdl:operation name="AcknowledgeResults">
    <soap:operation soapAction="http://aqis.gov.au/ecertsoap/AcknowledgeResults"
style="document" />
    <wsdl:input>
      <soap:body use="literal" />
    </wsdl:input>
    <wsdl:output>
      <soap:body use="literal" />
    </wsdl:output>
  </wsdl:operation>
  <wsdl:operation name="DownloadCertificates">
    <soap:operation soapAction="http://aqis.gov.au/ecertsoap/DownloadCertificates"
style="document" />
    <wsdl:input>
      <soap:body use="literal" />
    </wsdl:input>
    <wsdl:output>
      <soap:body use="literal" />
    </wsdl:output>
  </wsdl:operation>
  <wsdl:operation name="UpdateCertificateStatus">
    <soap:operation soapAction="http://aqis.gov.au/ecertsoap/UpdateCertificateStatus"
style="document" />
    <wsdl:input>
      <soap:body use="literal" />
    </wsdl:input>
    <wsdl:output>
      <soap:body use="literal" />
    </wsdl:output>
  </wsdl:operation>
</wsdl:binding>
<wsdl:binding name="EcertSOAPSsoap12" type="tns:EcertSOAPSsoap">
```

```
<soap12:binding transport="http://schemas.xmlsoap.org/soap/http" />
<wsdl:operation name="GetCertificateData">
  <soap12:operation soapAction="http://aqis.gov.au/ecertsoap/GetCertificateData"
style="document" />
  <wsdl:input>
    <soap12:body use="literal" />
  </wsdl:input>
  <wsdl:output>
    <soap12:body use="literal" />
  </wsdl:output>
</wsdl:operation>
<wsdl:operation name="AcknowledgeReceiptOf">
  <soap12:operation soapAction="http://aqis.gov.au/ecertsoap/AcknowledgeReceiptOf"
style="document" />
  <wsdl:input>
    <soap12:body use="literal" />
  </wsdl:input>
  <wsdl:output>
    <soap12:body use="literal" />
  </wsdl:output>
</wsdl:operation>
<wsdl:operation name="AcknowledgeResults">
  <soap12:operation soapAction="http://aqis.gov.au/ecertsoap/AcknowledgeResults"
style="document" />
  <wsdl:input>
    <soap12:body use="literal" />
  </wsdl:input>
  <wsdl:output>
    <soap12:body use="literal" />
  </wsdl:output>
</wsdl:operation>
<wsdl:operation name="DownloadCertificates">
  <soap12:operation soapAction="http://aqis.gov.au/ecertsoap/DownloadCertificates"
style="document" />
  <wsdl:input>
    <soap12:body use="literal" />
  </wsdl:input>
  <wsdl:output>
    <soap12:body use="literal" />
  </wsdl:output>
</wsdl:operation>
<wsdl:operation name="UpdateCertificateStatus">
  <soap12:operation soapAction="http://aqis.gov.au/ecertsoap/UpdateCertificateStatus"
style="document" />
  <wsdl:input>
    <soap12:body use="literal" />
  </wsdl:input>
  <wsdl:output>
    <soap12:body use="literal" />
  </wsdl:output>
</wsdl:operation>
</wsdl:binding>
<wsdl:service name="EcertSOAP">
  <wsdl:port name="EcertSOAPSsoap" binding="tns:EcertSOAPSsoap">
    <soap:address location="http://apps.daff.gov.au/ecertsoap/ecertsoap.asmx" />
  </wsdl:port>
  <wsdl:port name="EcertSOAPSsoap12" binding="tns:EcertSOAPSsoap12">
```

```

    <soap12:address location="http://apps.daff.gov.au/ecertsoap/ecertsoap.asmx" />
  </wsdl:port>
</wsdl:service>
</wsdl:definitions>

```

3.2 E-cert SOAP Web Server Methods

The following methods have been implemented in the E-cert SOAP web service interface to allow import authorities to download certificate data.

3.2.1 DownloadCertificates

This method returns all the certificates that have not already been acknowledged. There are three parameters that need to be provided when calling this method. There are two values provided in the response from this method call.

3.2.1.1 Parameters

Login Login ID provided to the user by the E-cert Administrator.

Password The password for the login ID provided by the E-cert Administrator.

Statuscodes The status codes of the certificates to be downloaded. If it is null or an empty string all certificates will be downloaded.

3.2.1.2 Response Values

DownloadCertificatesResult This value contains the XML for the certificates that are available to be downloaded by the login ID.

jobTicket This value contains a unique string. This needs to be used as a parameter in the *AcknowledgeResults* method. See 3.2.2 *AcknowledgeResults* below.

3.2.1.3 Example

A typical request to use this method would look as follows:

```

POST /ecertsoap/ecertsoap.asmx HTTP/1.1
Host: apps.daff.gov.au
Content-Type: text/xml; charset=utf-8
Content-Length: length
SOAPAction: "http://aqis.gov.au/ecertsoap/DownloadCertificates"

```

```

<?xml version="1.0" encoding="utf-8"?>
<soap:Envelope xmlns:xsi="http://www.w3.org/2001/XMLSchema-instance" xmlns:xsd="http://www.w3.org/2001/XMLSchema"
xmlns:soap="http://schemas.xmlsoap.org/soap/envelope/">
  <soap:Body>
    <DownloadCertificates xmlns="http://aqis.gov.au/ecertsoap">
      <login>string</login>
      <password>string</password>
      <statuscodes>string</statuscodes>
    </DownloadCertificates>
  </soap:Body>
</soap:Envelope>

```

When downloading UN certificates, the response returned by the E-cert SOAP web service would look similar to the following (in this case, two certificates are being downloaded).

```

<?xml version="1.0" encoding="utf-8"?>
<soap:Envelope xmlns:soap="http://schemas.xmlsoap.org/soap/envelope/" xmlns:xsi="http://www.w3.org/2001/XMLSchema-instance"
xmlns:xsd="http://www.w3.org/2001/XMLSchema">

```

```

<soap:Body>
  <DownloadCertificatesResponse xmlns="http://aqis.gov.au/ecertssoap/">
    <DownloadCertificatesResult>&lt;?xml version="1.0" encoding="UTF-8"?&gt;&lt;certificates&gt;&lt;rsm:SPSCertificate
xmlns:xsi="http://www.w3.org/2001/XMLSchema-instance" xmlns:xsd="http://www.w3.org/2001/XMLSchema"
xmlns:rsm="urn:un:unece:uncefact:data:standard:SPSCertificate:7"
xmlns:ram="urn:un:unece:uncefact:data:standard:ReusableAggregateBusinessInformationEntity:11"&gt;&lt;rsm:SPSExchangedDocume
nt&gt;&lt;ram:Name
languageID="en"&gt;E171&lt;/ram:Name&gt;&lt;ram:ID&gt;1332657&lt;/ram:ID&gt;&lt;ram:TypeCode&gt;852&lt;/ram:TypeCode&gt;&lt;r
am:StatusCode&gt;39&lt;/ram:StatusCode&gt;&lt;ram:IssueDate&gt;2013-06-
07T00:48:47&lt;/ram:IssueDate&gt;&lt;ram:IssuerSPSParty&gt;&lt;ram:Name&gt;Department of Agriculture, Fisheries and
Forestry&lt;/ram:Name&gt;&lt;ram:IssuerSPSParty&gt;&lt;ram:SignatorySPSAAuthentication&gt;&lt;ram:ActualDate&gt;2013-06-
07T00:00:00&lt;/ram:ActualDate&gt;&lt;ram:IssueSPSLocation&gt;&lt;ram:Name&gt;MC LEVEL 2 Aust Capital
Terr&lt;/ram:Name&gt;&lt;ram:IssueSPSLocation&gt;&lt;ram:ProviderSPSParty&gt;&lt;ram:Name&gt;Official
Veterinarian&lt;/ram:Name&gt;&lt;ram:RoleCode&gt;PQ&lt;/ram:RoleCode&gt;&lt;ram:SpecifiedSPSPerson&gt;&lt;ram:Name&gt;Andy&
t;/ram:Name&gt;&lt;ram:AttainedSPSQualification&gt;&lt;ram:Name&gt;AO OF
DAFF&lt;/ram:Name&gt;&lt;ram:AttainedSPSQualification&gt;&lt;ram:SpecifiedSPSPerson&gt;&lt;ram:ProviderSPSParty&gt;&lt;ram:In
cludedSPSClause&gt;&lt;ram:ID&gt;E171&lt;/ram:ID&gt;&lt;ram:Content languageID="en"&gt;I hereby certify that the meat specified
above has been examined and found, by ante-mortem and post-mortem veterinary inspection, to be free from disease and suitable in
every way for human consumption and that no injurious ingredient has been used in its
preparation.&lt;/ram:Content&gt;&lt;ram:IncludedSPSClause&gt;&lt;ram:IncludedSPSClause&gt;&lt;ram:ID&gt;72&lt;/ram:ID&gt;&lt;ram:
Content languageID="en"&gt;were slaughtered between the dates of 1-JUN-2013 and 2-JUN-
2013&lt;/ram:Content&gt;&lt;ram:IncludedSPSClause&gt;&lt;ram:SignatorySPSAAuthentication&gt;&lt;rsm:SPSExchangedDocument&g
t;&lt;rsm:SPSConsignment&gt;&lt;ram:ExportExitDate&gt;2013-08-
31T00:00:00&lt;/ram:ExportExitDate&gt;&lt;ram:ConsignorSPSParty&gt;&lt;ram:ID&gt;99999&lt;/ram:ID&gt;&lt;ram:Name&gt;AAA
DAFF TEST
EXPORTER&lt;/ram:Name&gt;&lt;ram:RoleCode&gt;EX&lt;/ram:RoleCode&gt;&lt;ram:SpecifiedSPSAddress&gt;&lt;ram:PostcodeCode
&gt;9999&lt;/ram:PostcodeCode&gt;&lt;ram:LineOne&gt;DAFF BIOSECURITY&lt;/ram:LineOne&gt;&lt;ram:LineTwo&gt;SERVICE
TESTING
SYSTEM&lt;/ram:LineTwo&gt;&lt;ram:CityName&gt;XXX&lt;/ram:CityName&gt;&lt;ram:CountryID&gt;AU&lt;/ram:CountryID&gt;&lt;ram:C
ountryName&gt;Australia&lt;/ram:CountryName&gt;&lt;ram:CountrySubDivisionID&gt;TAS&lt;/ram:CountrySubDivisionID&gt;&lt;ram:Sp
ecifiedSPSAddress&gt;&lt;ram:ConsignorSPSParty&gt;&lt;ram:ConsigneeSPSParty&gt;&lt;ram:ID&gt;73897-
2897&lt;/ram:ID&gt;&lt;ram:Name&gt;GROMIT THE
IMPORTER&lt;/ram:Name&gt;&lt;ram:RoleCode&gt;CN&lt;/ram:RoleCode&gt;&lt;ram:SpecifiedSPSAddress&gt;&lt;ram:PostcodeCode&
gt;89038&lt;/ram:PostcodeCode&gt;&lt;ram:LineOne&gt;62 WEST WALLABY
STREET&lt;/ram:LineOne&gt;&lt;ram:CityName&gt;JURONG&lt;/ram:CityName&gt;&lt;ram:CountryID&gt;SG&lt;/ram:CountryID&gt;&lt;r
am:CountryName&gt;SINGAPORE&lt;/ram:CountryName&gt;&lt;ram:SpecifiedSPSAddress&gt;&lt;ram:ConsigneeSPSParty&gt;&lt;ra
m:ExportSPSCountry&gt;&lt;ram:ID&gt;AU&lt;/ram:ID&gt;&lt;ram:Name&gt;Australia&lt;/ram:Name&gt;&lt;ram:ExportSPSCountry&gt;&
t;/ram>LoadingBaseportSPSLocation&gt;&lt;ram:ID&gt;AUCMD&lt;/ram:ID&gt;&lt;ram:Name&gt;COOTAMUNDRA&lt;/ram:Name&gt;&lt;/r
am>LoadingBaseportSPSLocation&gt;&lt;ram:ImportSPSCountry&gt;&lt;ram:ID&gt;SG&lt;/ram:ID&gt;&lt;ram:Name&gt;SINGAPORE&lt;/
ram:Name&gt;&lt;ram:ImportSPSCountry&gt;&lt;ram:ConsigneeReceiptSPSLocation&gt;&lt;ram:Name&gt;JURONG&lt;/ram:Name&gt;
&lt;/ram:ConsigneeReceiptSPSLocation&gt;&lt;ram:UnloadingBaseportSPSLocation&gt;&lt;ram:ID&gt;SGJUR&lt;/ram:ID&gt;&lt;ram:Na
me&gt;JURONG/SINGAPORE&lt;/ram:Name&gt;&lt;ram:UnloadingBaseportSPSLocation&gt;&lt;ram:ExaminationSPSEvent&gt;&lt;ram:
OccurrenceSPSLocation&gt;&lt;ram:ID&gt;SGJUR&lt;/ram:ID&gt;&lt;ram:Name&gt;JURONG/SINGAPORE&lt;/ram:Name&gt;&lt;ram:O
ccurrenceSPSLocation&gt;&lt;ram:ExaminationSPSEvent&gt;&lt;ram:MainCarriageSPSTransportMovement&gt;&lt;ram:ID&gt;SDFS&
t;/ram:ID&gt;&lt;ram:ModeCode&gt;1&lt;/ram:ModeCode&gt;&lt;ram:UsedSPSTransportMeans&gt;&lt;ram:Name&gt;DSFSD&lt;/ram:N
ame&gt;&lt;ram:UsedSPSTransportMeans&gt;&lt;ram:MainCarriageSPSTransportMovement&gt;&lt;ram:UtilizedSPSTransportEquipm
ent&gt;&lt;ram:ID&gt;SDFS&lt;/ram:ID&gt;&lt;ram:AffixedSPSSeal&gt;&lt;ram:ID&gt;100008&lt;/ram:ID&gt;&lt;ram:MaximumID&gt;10
0009&lt;/ram:MaximumID&gt;&lt;ram:AffixedSPSSeal&gt;&lt;ram:UtilizedSPSTransportEquipment&gt;&lt;ram:IncludedSPSConsignm
entItem&gt;&lt;ram:IncludedSPSTradeLineItem&gt;&lt;ram:SequenceNumeric&gt;1&lt;/ram:SequenceNumeric&gt;&lt;ram:Description&g
t;UT A 9250 BPUT A 9250 BPF BONE INA 1610W
BP&lt;/ram:Description&gt;&lt;ram:CommonName&gt;BOVINE&lt;/ram:CommonName&gt;&lt;ram:NetWeightMeasure
unitCode="KGM"&gt;99.000&lt;/ram:NetWeightMeasure&gt;&lt;ram:ApplicableSPSClassification&gt;&lt;ram:SystemName&gt;Category
Code&lt;/ram:SystemName&gt;&lt;ram:ClassName&gt;1610W
&lt;/ram:ClassName&gt;&lt;ram:ApplicableSPSClassification&gt;&lt;ram:ApplicableSPSClassification&gt;&lt;ram:SystemName&gt;Prod
uct
Code&lt;/ram:SystemName&gt;&lt;ram:ClassName&gt;OSPRODUCT&lt;/ram:ClassName&gt;&lt;ram:ApplicableSPSClassification&gt;&
lt;/ram:PhysicalSPSPackage&gt;&lt;ram:LevelCode&gt;1&lt;/ram:LevelCode&gt;&lt;ram:TypeCode&gt;CT&lt;/ram:TypeCode&gt;&lt;ram:I
temQuantity&gt;10&lt;/ram:ItemQuantity&gt;&lt;ram:PhysicalSPSShippingMarks&gt;&lt;ram:Marking&gt;mark
1&lt;/ram:Marking&gt;&lt;ram:PhysicalSPSShippingMarks&gt;&lt;ram:PhysicalSPSPackage&gt;&lt;ram:AppliedSPSProcess&gt;&lt;ram:
TypeCode name="Packing"&gt;13&lt;/ram:TypeCode&gt;&lt;ram:CompletionSPSPeriod&gt;&lt;ram:StartDate&gt;2013-06-
02T00:00:00&lt;/ram:StartDate&gt;&lt;ram:EndDate&gt;2013-06-
03T00:00:00&lt;/ram:EndDate&gt;&lt;ram:CompletionSPSPeriod&gt;&lt;ram:OperatorSPSParty&gt;&lt;ram:ID&gt;77&lt;/ram:ID&gt;
&lt;/ram:Name
/&gt;&lt;ram:RoleCode&gt;OP&lt;/ram:RoleCode&gt;&lt;ram:OperatorSPSParty&gt;&lt;ram:AppliedSPSProcess&gt;&lt;ram:AppliedSPS
Process&gt;&lt;ram:TypeCode
name="Slaughter"&gt;12&lt;/ram:TypeCode&gt;&lt;ram:OperatorSPSParty&gt;&lt;ram:ID&gt;77&lt;/ram:ID&gt;&lt;ram:Name
/&gt;&lt;ram:RoleCode&gt;OP&lt;/ram:RoleCode&gt;&lt;ram:OperatorSPSParty&gt;&lt;ram:AppliedSPSProcess&gt;&lt;ram:IncludedSP
STradeLineItem&gt;&lt;ram:IncludedSPSConsignmentItem&gt;&lt;rsm:SPSConsignment&gt;&lt;rsm:SPSCertificate&gt;&lt;rsm:SPSCe
rtificate xmlns:xsi="http://www.w3.org/2001/XMLSchema-instance" xmlns:xsd="http://www.w3.org/2001/XMLSchema"
xmlns:rsm="urn:un:unece:uncefact:data:standard:SPSCertificate:7"
xmlns:ram="urn:un:unece:uncefact:data:standard:ReusableAggregateBusinessInformationEntity:11"&gt;&lt;rsm:SPSExchangedDocume
nt&gt;&lt;ram:Name
languageID="en"&gt;E171&lt;/ram:Name&gt;&lt;ram:ID&gt;1332656&lt;/ram:ID&gt;&lt;ram:TypeCode&gt;852&lt;/ram:TypeCode&gt;&lt;r
am:StatusCode&gt;39&lt;/ram:StatusCode&gt;&lt;ram:IssueDate&gt;2013-06-
07T00:48:11&lt;/ram:IssueDate&gt;&lt;ram:IssuerSPSParty&gt;&lt;ram:Name&gt;Department of Agriculture, Fisheries and

```

```

Forestry&lt;/ram:Name&gt;&lt;/ram:IssuerSPSParty&gt;&lt;/ram:SignatorySPSAAuthentication&gt;&lt;/ram:ActualDateTime&gt;2013-06-07T00:00:00&lt;/ram:ActualDateTime&gt;&lt;/ram:IssueSPSLocation&gt;&lt;/ram:Name&gt; MC LEVEL 2 Aust Capital Terr&lt;/ram:Name&gt;&lt;/ram:IssueSPSLocation&gt;&lt;/ram:ProviderSPSParty&gt;&lt;/ram:Name&gt;Official Veterinarian&lt;/ram:Name&gt;&lt;/ram:RoleCode&gt;PQ&lt;/ram:RoleCode&gt;&lt;/ram:SpecifiedSPSPerson&gt;&lt;/ram:Name&gt;Andy&lt;/ram:Name&gt;&lt;/ram:AttainedSPSQualification&gt;&lt;/ram:Name&gt;AO OF DAFF&lt;/ram:Name&gt;&lt;/ram:AttainedSPSQualification&gt;&lt;/ram:SpecifiedSPSPerson&gt;&lt;/ram:ProviderSPSParty&gt;&lt;/ram:IncludedSPSClause&gt;&lt;/ram:ID&gt;E171&lt;/ram:ID&gt;&lt;/ram:Content languageID="en"&gt;I hereby certify that the meat specified above has been examined and found, by ante-mortem and post-mortem veterinary inspection, to be free from disease and suitable in every way for human consumption and that no injurious ingredient has been used in its preparation.&lt;/ram:Content&gt;&lt;/ram:IncludedSPSClause&gt;&lt;/ram:ID&gt;118&lt;/ram:ID&gt;&lt;/ram:Content languageID="en"&gt;were slaughtered on 4-JUN-2013&lt;/ram:Content&gt;&lt;/ram:IncludedSPSClause&gt;&lt;/ram:SignatorySPSAAuthentication&gt;&lt;/rsm:SPSExchangedDocument&gt;&lt;/rsm:SPSConsignment&gt;&lt;/ram:ExportExitDateTime&gt;2013-08-31T00:00:00&lt;/ram:ExportExitDateTime&gt;&lt;/ram:ConsignorSPSParty&gt;&lt;/ram:ID&gt;99999&lt;/ram:ID&gt;&lt;/ram:Name&gt;AAA DAFF TEST EXPORTER&lt;/ram:Name&gt;&lt;/ram:RoleCode&gt;EX&lt;/ram:RoleCode&gt;&lt;/ram:SpecifiedSPSAddress&gt;&lt;/ram:PostcodeCode&gt;9999&lt;/ram:PostcodeCode&gt;&lt;/ram:LineOne&gt;DAFF BIOSECURITY&lt;/ram:LineOne&gt;&lt;/ram:LineTwo&gt;SERVICE TESTING SYSTEM&lt;/ram:LineTwo&gt;&lt;/ram:CityName&gt;XXX&lt;/ram:CityName&gt;&lt;/ram:CountryID&gt;AU&lt;/ram:CountryID&gt;&lt;/ram:CountryName&gt;Australia&lt;/ram:CountryName&gt;&lt;/ram:CountrySubDivisionID&gt;TAS&lt;/ram:CountrySubDivisionID&gt;&lt;/ram:SpecifiedSPSAddress&gt;&lt;/ram:ConsignorSPSParty&gt;&lt;/ram:ConsigneeSPSParty&gt;&lt;/ram:Name&gt;GROMIT THE IMPORTER&lt;/ram:Name&gt;&lt;/ram:RoleCode&gt;CN&lt;/ram:RoleCode&gt;&lt;/ram:SpecifiedSPSAddress&gt;&lt;/ram:PostcodeCode&gt;89038&lt;/ram:PostcodeCode&gt;&lt;/ram:LineOne&gt;62 WEST WALLABY STREET&lt;/ram:LineOne&gt;&lt;/ram:CityName&gt;JURONG&lt;/ram:CityName&gt;&lt;/ram:CountryID&gt;SG&lt;/ram:CountryID&gt;&lt;/ram:CountryName&gt;SINGAPORE&lt;/ram:CountryName&gt;&lt;/ram:SpecifiedSPSAddress&gt;&lt;/ram:ConsigneeSPSParty&gt;&lt;/ram:ExportSPSCountry&gt;&lt;/ram:ID&gt;AU&lt;/ram:ID&gt;&lt;/ram:Name&gt;Australia&lt;/ram:Name&gt;&lt;/ram:ExportSPSCountry&gt;&lt;/ram>LoadingBaseportSPSLocation&gt;&lt;/ram:ID&gt;AUCMD&lt;/ram:ID&gt;&lt;/ram:Name&gt;COOTAMUNDRA&lt;/ram:Name&gt;&lt;/ram>LoadingBaseportSPSLocation&gt;&lt;/ram:ImportSPSCountry&gt;&lt;/ram:ID&gt;SG&lt;/ram:ID&gt;&lt;/ram:Name&gt;SINGAPORE&lt;/ram:Name&gt;&lt;/ram:ImportSPSCountry&gt;&lt;/ram:ConsigneeReceiptSPSLocation&gt;&lt;/ram:Name&gt;JURONG&lt;/ram:Name&gt;&lt;/ram:ConsigneeReceiptSPSLocation&gt;&lt;/ram:UnloadingBaseportSPSLocation&gt;&lt;/ram:ID&gt;SGJUR&lt;/ram:ID&gt;&lt;/ram:Name&gt;JURONG/SINGAPORE&lt;/ram:Name&gt;&lt;/ram:OccurrenceSPSLocation&gt;&lt;/ram:ID&gt;SGJUR&lt;/ram:ID&gt;&lt;/ram:Name&gt;JURONG/SINGAPORE&lt;/ram:Name&gt;&lt;/ram:OccurrenceSPSLocation&gt;&lt;/ram:ExaminationSPSEvent&gt;&lt;/ram:MainCarriageSPSTransportMovement&gt;&lt;/ram:ID&gt;SDFS&lt;/ram:ID&gt;&lt;/ram:ModeCode&gt;1&lt;/ram:ModeCode&gt;&lt;/ram:UsedSPSTransportMeans&gt;&lt;/ram:Name&gt;DSF&lt;/ram:Name&gt;&lt;/ram:UsedSPSTransportMeans&gt;&lt;/ram:MainCarriageSPSTransportMovement&gt;&lt;/ram:UtilizedSPSTransportEquipment&gt;&lt;/ram:ID&gt;SDFS&lt;/ram:ID&gt;&lt;/ram:AffixedSPSSeal&gt;&lt;/ram:ID&gt;1000001&lt;/ram:ID&gt;&lt;/ram:MaximumID&gt;1000008&lt;/ram:MaximumID&gt;&lt;/ram:AffixedSPSSeal&gt;&lt;/ram:UtilizedSPSTransportEquipment&gt;&lt;/ram:IncludedSPSConsignmentItem&gt;&lt;/ram:IncludedSPSTradeLineItem&gt;&lt;/ram:SequenceNumeric&gt;1&lt;/ram:SequenceNumeric&gt;&lt;/ram:Description&gt;UT A 9250 BPUT A 9250 BP&lt;/ram:Description&gt;&lt;/ram:NetWeightMeasure unitCode="KGM"&gt;100.000&lt;/ram:NetWeightMeasure&gt;&lt;/ram:PhysicalSPSPackage&gt;&lt;/ram:LevelCode&gt;1&lt;/ram:LevelCode&gt;&lt;/ram:TypeCode&gt;CT&lt;/ram:TypeCode&gt;&lt;/ram:ItemQuantity&gt;10&lt;/ram:ItemQuantity&gt;&lt;/ram:PhysicalSPSShippingMarks&gt;&lt;/ram:Marking&gt;mark 1&lt;/ram:Marking&gt;&lt;/ram:PhysicalSPSShippingMarks&gt;&lt;/ram:PhysicalSPSPackage&gt;&lt;/ram:AppliedSPSProcess&gt;&lt;/ram:TypeCode name="Packing"&gt;13&lt;/ram:TypeCode&gt;&lt;/ram:OperatorSPSParty&gt;&lt;/ram:ID&gt;77&lt;/ram:ID&gt;&lt;/ram:Name /&gt;&lt;/ram:RoleCode&gt;OP&lt;/ram:RoleCode&gt;&lt;/ram:OperatorSPSParty&gt;&lt;/ram:AppliedSPSProcess&gt;&lt;/ram:IncludedSPSTradeLineItem&gt;&lt;/ram:IncludedSPSConsignmentItem&gt;&lt;/rsm:SPSConsignment&gt;&lt;/rsm:SPSCertificate&gt;&lt;/certificates&gt;&lt;/DownloadCertificatesResult>
      <jobTicket>b95e9b1b-2f40-43ac-a1f4-fff1068fdf9f</jobTicket>
    </DownloadCertificatesResponse>
  </soap:Body>
</soap:Envelope>

```

When downloading 2.8 version certificates, the response returned by the E-cert SOAP web service would look similar to the following.

```

<?xml version="1.0" encoding="utf-8"?>
<soap:Envelope xmlns:soap="http://schemas.xmlsoap.org/soap/envelope/" xmlns:xsi="http://www.w3.org/2001/XMLSchema-instance" xmlns:xsd="http://www.w3.org/2001/XMLSchema">
  <soap:Body>
    <DownloadCertificatesResponse xmlns="http://aqis.gov.au/ecertssoap">
      <DownloadCertificatesResult>&lt;?xml version="1.0" encoding="UTF-8"?&gt;&lt;/certificates&gt;&lt;/certificate no="2055242" status="Approved"&gt;&lt;/issue_date day="3" month="3" year="2005" hour="23" minute="47" second="53"&gt;2005-03-03 23:47:53&lt;/issue_date&gt;&lt;/exporting_country country_code="AU"&gt;&lt;/country_name&gt;Australia&lt;/country_name&gt;&lt;/competent_authority&gt;Department of Agriculture, Fisheries and Forestry&lt;/competent_authority&gt;&lt;/exporting_country&gt;&lt;/importing_country country_code="SG"&gt;&lt;/country_name&gt;SINGAPORE&lt;/country_name&gt;&lt;/importing_country&gt;&lt;/title&gt;&lt;/text language="en"&gt;OFFICIAL CERTIFICATE WITH RESPECT TO MEAT, MEAT PRODUCTS AND EDIBLE OFFAL &lt;/text&gt;&lt;/title&gt;&lt;/exporter id="99999"&gt;&lt;/name&gt; AAA DAFF TEST EXPORTER &lt;/name&gt;&lt;/address&gt;EDMUND BARTON BUILDING, BROUGHTON STREET, BARTON, CANBERRA NSW 2600, Australia&lt;/address&gt;&lt;/exporter&gt;&lt;/consignee id="34535345345"&gt;&lt;/name&gt;FDGDFG&lt;/name&gt;&lt;/address&gt;DFGDFG, DFGFD DFG, SINGAPORE&lt;/address&gt;&lt;/consignee&gt;&lt;/departure_date day="4" month="3" year="2005"&gt;2005-03-04&lt;/departure_date&gt;&lt;/loading_port country_code="AU" city_code="AUSYD"&gt;SYDNEY&lt;/loading_port&gt;&lt;/final_destination&gt;UTTYUT&lt;/final_destination&gt;&lt;/inspection_port

```

```

country_code="SG" city_code="SGAYC"&gt;PULAN AYER CHAWAN&lt;/inspection_port&gt;&lt;/discharge_port country_code="SG"
city_code="SGAYC"&gt;PULAN AYER CHAWAN&lt;/discharge_port&gt;&lt;/transport
mode="Sea"&gt;&lt;/craft&gt;DSFSDF&lt;/craft&gt;&lt;/conveyance_ref&gt;SDFSDF&lt;/conveyance_ref&gt;&lt;/transport&gt;&lt;/product
item="1"&gt;&lt;/description&gt;22 X 33 KGM BULK PACK CHILLED BONE IN BEEF SIDE BULK
PACK&lt;/description&gt;&lt;/species&gt;BOVINE&lt;/species&gt;&lt;/origin_source country="Australia" country_code="AU"
/&gt;&lt;/classification type="Category Code"&gt;1000&lt;/classification&gt;&lt;/classification type="Product Code"&gt;MCA
BP&lt;/classification&gt;&lt;/package level="1" package_type="BULK PACK" type_code="BP" package_number="22"&gt;22 BULK
PACK&lt;/package&gt;&lt;/weight type="NET" amount="101.000" unit="KGM" unit_name="KILOGRAM"&gt;101.000 KILOGRAM
NET&lt;/weight&gt;&lt;/processing&gt;&lt;/processing_type code="PK"&gt;Packing&lt;/processing_type&gt;&lt;/dates&gt;&lt;/start_date
day="1" month="3" year="2005"&gt;2005-03-01&lt;/start_date&gt;&lt;/end_date day="1" month="3" year="2005"&gt;2005-03-
01&lt;/end_date&gt;&lt;/dates&gt;&lt;/premises id=" 77" /&gt;&lt;/processing&gt;&lt;/processing&gt;&lt;/processing_type
code="SL"&gt;Slaughter&lt;/processing_type&gt;&lt;/premises id=" 77" /&gt;&lt;/dates&gt;&lt;/start_date day="1" month="3"
year="2004"&gt;2004-03-01&lt;/start_date&gt;&lt;/end_date day="1" month="3" year="2005"&gt;2005-03-
01&lt;/end_date&gt;&lt;/dates&gt;&lt;/processing&gt;&lt;/product&gt;&lt;/approval type="Certificate
Authentication"&gt;&lt;/declaration&gt;&lt;/code&gt;E171&lt;/code&gt;&lt;/statement language="en"&gt;I hereby certify that the meat
specified above has been examined and found, by ante-mortem and post-mortem veterinary inspection, to be free from disease and
suitable in every way for human consumption and that no injurious ingredient has been used in its
preparation.&lt;/statement&gt;&lt;/declaration&gt;&lt;/declaration&gt;&lt;/code&gt;E171&lt;/code&gt;&lt;/statement
language="en"&gt;Slaughter Dates 1ST MARCH 2004 TO 1ST MARCH 2005
&lt;/statement&gt;&lt;/declaration&gt;&lt;/declaration&gt;&lt;/code&gt;198&lt;/code&gt;&lt;/statement language="en"&gt;I certify that
Australia has been free from Foot and Mouth Disease and Rinderpest for six months immediately prior to the slaughter and export of the
animals and no contamination took place prior to export. Australia has been free from Bovine Spongiform Encephalopathy for six years
prior to the date of slaughter and the date of export of the product to Singapore. The animals from which the meat covered by this
certificate is derived were slaughtered between the dates of 1-MAR-2004 and 1-MAR-
2005&lt;/statement&gt;&lt;/declaration&gt;&lt;/name&gt;Ann
Mcdonald&lt;/name&gt;&lt;/qualifications&gt;Bvsc&lt;/qualifications&gt;&lt;/role&gt;Official
Veterinarian&lt;/role&gt;&lt;/location&gt;CANBERRA AUSTRALIAN CAPITAL TERRITORY &lt;/location&gt;&lt;/date day="4" month="3"
year="2005"&gt;2005-03-04&lt;/date&gt;&lt;/approval&gt;&lt;/certificate&gt;&lt;/certificate no="2055241"
status="Approved"&gt;&lt;/issue_date day="3" month="3" year="2005" hour="23" minute="33" second="14"&gt;2005-03-03
23:33:14&lt;/issue_date&gt;&lt;/exporting_country
country_code="AU"&gt;&lt;/country_name&gt;Australia&lt;/country_name&gt;&lt;/competent_authority&gt;Department of Agriculture,
Fisheries and Forestry&lt;/competent_authority&gt;&lt;/importing_country
country_code="SG"&gt;&lt;/country_name&gt;SINGAPORE&lt;/country_name&gt;&lt;/importing_country&gt;&lt;/title&gt;&lt;/text
language="en"&gt;OFFICIAL CERTIFICATE WITH RESPECT TO MEAT, MEAT PRODUCTS AND EDIBLE OFFAL
&lt;/text&gt;&lt;/title&gt;&lt;/exporter id="99999"&gt;&lt;/name&gt; AAA DAFF TEST EXPORTER &lt;/name&gt;&lt;/address&gt;EDMUND
BARTON BUILDING, BROUGHTON STREET, BARTON, CANBERRA NSW 2600,
Australia&lt;/address&gt;&lt;/exporter&gt;&lt;/consignee
id="334545656"&gt;&lt;/name&gt;CONSIGNEE&lt;/name&gt;&lt;/address&gt;CONSIGNEE, CONSIGNEE 2323,
FRANCE&lt;/address&gt;&lt;/consignee&gt;&lt;/departure_date day="9" month="3" year="2005"&gt;2005-03-
09&lt;/departure_date&gt;&lt;/loading_port country_code="AU"
city_code="AUADL"&gt;ADELAIDE&lt;/loading_port&gt;&lt;/final_destination&gt;SINGAPORE&lt;/final_destination&gt;&lt;/inspection_port
country_code="SG" city_code="SGSIN"&gt;SINGAPORE&lt;/inspection_port&gt;&lt;/discharge_port country_code="SG"
city_code="SGSIN"&gt;SINGAPORE&lt;/discharge_port&gt;&lt;/transport
mode="Sea"&gt;&lt;/craft&gt;ARAFURA&lt;/craft&gt;&lt;/conveyance_ref&gt;45363&lt;/conveyance_ref&gt;&lt;/transport&gt;&lt;/product
item="1"&gt;&lt;/description&gt;BONELESS BEEF&lt;/description&gt;&lt;/species&gt;BOVINE&lt;/species&gt;&lt;/origin_source
country="Australia" country_code="AU" /&gt;&lt;/classification type="Category Code"&gt;1000&lt;/classification&gt;&lt;/classification
type="Product Code"&gt;MCA BP&lt;/classification&gt;&lt;/package level="1" package_type="CARTONS" type_code="CT"
package_number="45"&gt;45 CARTONS&lt;/package&gt;&lt;/weight type="NET" amount="1000.000" unit="KGM"
unit_name="KILOGRAM"&gt;1000.000 KILOGRAM NET&lt;/weight&gt;&lt;/processing&gt;&lt;/processing_type
code="PK"&gt;Packing&lt;/processing_type&gt;&lt;/dates&gt;&lt;/start_date day="27" month="2" year="2005"&gt;2005-02-
27&lt;/start_date&gt;&lt;/end_date day="27" month="2" year="2005"&gt;2005-02-27&lt;/end_date&gt;&lt;/dates&gt;&lt;/premises id=" 77"
/&gt;&lt;/processing&gt;&lt;/processing&gt;&lt;/processing_type code="SL"&gt;Slaughter&lt;/processing_type&gt;&lt;/premises id=" 77"
/&gt;&lt;/dates&gt;&lt;/start_date day="27" month="2" year="2005"&gt;2005-02-27&lt;/start_date&gt;&lt;/end_date day="27" month="2"
year="2005"&gt;2005-02-27&lt;/end_date&gt;&lt;/dates&gt;&lt;/processing&gt;&lt;/product&gt;&lt;/approval type="Certificate
Authentication"&gt;&lt;/declaration&gt;&lt;/code&gt;E171&lt;/code&gt;&lt;/statement language="en"&gt;I hereby certify that the meat
specified above has been examined and found, by ante-mortem and post-mortem veterinary inspection, to be free from disease and
suitable in every way for human consumption and that no injurious ingredient has been used in its
preparation.&lt;/statement&gt;&lt;/declaration&gt;&lt;/declaration&gt;&lt;/code&gt;E171&lt;/code&gt;&lt;/statement
language="en"&gt;Slaughter Dates 27TH FEBRUARY 2005
&lt;/statement&gt;&lt;/declaration&gt;&lt;/declaration&gt;&lt;/code&gt;198&lt;/code&gt;&lt;/statement language="en"&gt;I certify that
Australia has been free from Foot and Mouth Disease and Rinderpest for six months immediately prior to the slaughter and export of the
animals and no contamination took place prior to export. Australia has been free from Bovine Spongiform Encephalopathy for six years
prior to the date of slaughter and the date of export of the product to Singapore. The animals from which the meat covered by this
certificate is derived were slaughtered on 27-FEB-2005&lt;/statement&gt;&lt;/declaration&gt;&lt;/name&gt;Ann
Mcdonald&lt;/name&gt;&lt;/qualifications&gt;Bvsc&lt;/qualifications&gt;&lt;/role&gt;Official
Veterinarian&lt;/role&gt;&lt;/location&gt;CANBERRA AUSTRALIAN CAPITAL TERRITORY &lt;/location&gt;&lt;/date day="4" month="3"
year="2005"&gt;2005-03-04&lt;/date&gt;&lt;/approval&gt;&lt;/certificate&gt;&lt;/certificates&gt;</DownloadCertificatesResult>
</jobTicket>c4fb395b-9ac2-4b46-80b6-f935f387f014</jobTicket>
</DownloadCertificatesResponse>
</soap:Body>
</soap:Envelope>

```

3.2.2 AcknowledgeResults

This method acknowledges the download of the certificates by the call to *DownloadCertificates*, identified by the jobTicket value that was returned from *DownloadCertificates*.

3.2.2.1 Parameters

- login The login ID that was used in the call to the *DownloadCertificates* method that returned the unique string specified in the jobTicket parameter.
- jobTicket The job ticket that was returned by the call to the associated *DownloadCertificates* method.

3.2.2.2 Response Values

No values are returned in the response to the method call.

3.2.2.3 Example

A typical request to use this method would look as follows:

```
POST /ecertsoap/ecertsoap.asmx HTTP/1.1
Host: apps.daff.gov.au
Content-Type: text/xml; charset=utf-8
Content-Length: length
SOAPAction: "http://aqis.gov.au/ecertsoap/AcknowledgeResults"
```

```
<?xml version="1.0" encoding="utf-8"?>
<soap:Envelope xmlns:xsi="http://www.w3.org/2001/XMLSchema-instance" xmlns:xsd="http://www.w3.org/2001/XMLSchema"
xmlns:soap="http://schemas.xmlsoap.org/soap/envelope/">
  <soap:Body>
    <AcknowledgeResults xmlns="http://aqis.gov.au/ecertsoap/">
      <login>GregR</login>
      <jobTicket>c4fb395b-9ac2-4b46-80b6-f935f387f014</jobTicket>
    </AcknowledgeResults>
  </soap:Body>
</soap:Envelope>
```

The response returned by the E-cert SOAP web service would look similar to the following.

```
<?xml version="1.0" encoding="utf-8"?>
<soap:Envelope xmlns:soap="http://schemas.xmlsoap.org/soap/envelope/" xmlns:xsi="http://www.w3.org/2001/XMLSchema-instance"
xmlns:xsd="http://www.w3.org/2001/XMLSchema">
  <soap:Body>
    <AcknowledgeResultsResponse xmlns="http://aqis.gov.au/ecertsoap/">
  </soap:Body>
</soap:Envelope>
```

3.2.3 GetCertificateData

This method allows the importing country to request a single certificate record where the health certificate number is known. The certificate has to be allowed for the credentials passed in.

3.2.3.1 Parameters

login Login ID provided to the user by the E-cert Administrator.
 password The password for the login ID provided by the E-cert Administrator.
 certificateNumber Identifies the certificate to be downloaded.

3.2.3.2 Response Values

GetCertificateDataResult This value contains the XML for the certificate that was downloaded.

3.2.3.3 Example

A typical request to use this method would look as follows:

```
POST /ecertsoap/ecertsoap.asmx HTTP/1.1
Host: apps.daff.gov.au
Content-Type: text/xml; charset=utf-8
Content-Length: length
SOAPAction: "http://aqis.gov.au/ecertsoap/GetCertificateData"
```

```
<?xml version="1.0" encoding="utf-8"?>
<soap:Envelope xmlns:xsi="http://www.w3.org/2001/XMLSchema-instance" xmlns:xsd="http://www.w3.org/2001/XMLSchema"
xmlns:soap="http://schemas.xmlsoap.org/soap/envelope/">
  <soap:Body>
    <GetCertificateData xmlns="http://aqis.gov.au/ecertsoap/">
      <login>GregR</login>
      <password>password</password>
      <certificateNumber>1332652</certificateNumber>
    </GetCertificateData>
  </soap:Body>
</soap:Envelope>
```

When getting a UN certificate, the response returned by the E-cert SOAP web service would look similar to the following.

```
<?xml version="1.0" encoding="utf-8"?>
<soap:Envelope xmlns:soap="http://schemas.xmlsoap.org/soap/envelope/" xmlns:xsi="http://www.w3.org/2001/XMLSchema-instance"
xmlns:xsd="http://www.w3.org/2001/XMLSchema">
  <soap:Body>
    <GetCertificateDataResponse xmlns="http://aqis.gov.au/ecertsoap/">
      <GetCertificateDataResult>&lt;?xml version="1.0" encoding="UTF-8"?&gt;&lt;certificates&gt;&lt;rsm:SPSCertificate
xmlns:xsi="http://www.w3.org/2001/XMLSchema-instance" xmlns:xsd="http://www.w3.org/2001/XMLSchema"
xmlns:rsm="urn:un:unece:uncefact:data:standard:SPSCertificate:7"
xmlns:ram="urn:un:unece:uncefact:data:standard:ReusableAggregateBusinessInformationEntity:11"&gt;&lt;rsm:SPSExchangedDocume
nt&gt;&lt;ram:Name languageID="en"&gt;CERTIFICATE AS TO
CONDITION&lt;ram:Name&gt;&lt;ram:ID&gt;1332652&lt;ram:ID&gt;&lt;ram:TypeCode&gt;851&lt;ram:TypeCode&gt;&lt;ram:StatusCod
e&gt;39&lt;ram:StatusCode&gt;&lt;ram:IssueDateTime&gt;2013-06-
05T06:34:34&lt;ram:IssueDateTime&gt;&lt;ram:IssuerSPSParty&gt;&lt;ram:Name&gt;Department of Agriculture, Fisheries and
Forestry&lt;ram:Name&gt;&lt;ram:IssuerSPSParty&gt;&lt;ram:ReferenceSPSReferencedDocument&gt;&lt;ram:RelationshipTypeCode&
gt;ANE&lt;ram:RelationshipTypeCode&gt;&lt;ram:ID&gt;11652&lt;ram:ID&gt;&lt;ram:ReferenceSPSReferencedDocument&gt;&lt;ram:
SignatorySPSAuthentication&gt;&lt;ram:ActualDateTime&gt;2013-06-
05T00:00:00&lt;ram:ActualDateTime&gt;&lt;ram:ProviderSPSParty&gt;&lt;ram:Name&gt;Official
Veterinarian&lt;ram:Name&gt;&lt;ram:RoleCode&gt;PQ&lt;ram:RoleCode&gt;&lt;ram:SpecifiedSPSPerson&gt;&lt;ram:Name&gt;Laura
Timmins&lt;ram:Name&gt;&lt;ram:AttainedSPSQualification&gt;&lt;ram:Name&gt;BVSC&lt;ram:Name&gt;&lt;ram:AttainedSPSQualific
ation&gt;&lt;ram:SpecifiedSPSPerson&gt;&lt;ram:ProviderSPSParty&gt;&lt;ram:IncludedSPSClause&gt;&lt;ram:Content
languageID="en"&gt;I hereby certify that to the best of my knowledge the conditions or restrictions applicable under the particular
```



```

inspection system prescribed in Regulations or Orders under the Export Control Act 1982 have been complied with in respect of the
prescribed goods described above, being goods that are: 1. In sound condition 2. Of Australian
Origin</ram:Content></ram:IncludedSPSClause></ram:SignatorySPSAuthentication></rsm:SPSExchangedDocument>
</rsm:SPSConsignment></ram:ExportExitDateTime>>2013-08-
31T00:00:00</ram:ExportExitDateTime></ram:ConsignorSPSParty></ram:ID>>99999</ram:ID></ram:Name>>AAA
DAFF TEST
EXPORTER</ram:Name></ram:RoleCode>>EX</ram:RoleCode></ram:SpecifiedSPSAddress></ram:PostcodeCode
>>9999</ram:PostcodeCode></ram:LineOne>>DAFF BIOSECURITY</ram:LineOne></ram:LineTwo>>SERVICE
TESTING
SYSTEM</ram:LineTwo></ram:CityName>>XXX</ram:CityName></ram:CountryID>>AU</ram:CountryID></ram:C
ountryName>>Australia</ram:CountryName></ram:CountrySubDivisionID>>TAS</ram:CountrySubDivisionID></ram:Sp
ecifiedSPSAddress></ram:ConsignorSPSParty></ram:ConsigneeSPSParty></ram:Name>>GROMIT THE
IMPORTER</ram:Name></ram:RoleCode>>CN</ram:RoleCode></ram:SpecifiedSPSAddress></ram:PostcodeCode>
>>89038</ram:PostcodeCode></ram:LineOne>>62 WEST WALLABY
STREET</ram:LineOne></ram:CityName>>JURONG</ram:CityName></ram:CountryID>>SG</ram:CountryID></r
am:CountryName>>SINGAPORE</ram:CountryName></ram:SpecifiedSPSAddress></ram:ConsigneeSPSParty></ra
m:ExportSPSCountry></ram:ID>>AU</ram:ID></ram:Name>>Australia</ram:Name></ram:ExportSPSCountry></I
t;ram>LoadingBaseportSPSLocation></ram:ID>>AUCMD</ram:ID></ram:Name>>COOTAMUNDRA</ram:Name></ram:
am>LoadingBaseportSPSLocation></ram:ImportSPSCountry></ram:ID>>SG</ram:ID></ram:Name>>SINGAPORE</r
am:Name></ram:ImportSPSCountry></ram:ConsigneeReceiptSPSLocation></ram:Name>>JURONG</ram:Name>
</ram:ConsigneeReceiptSPSLocation></ram:UnloadingBaseportSPSLocation></ram:ID>>SGJUR</ram:ID></ram:Na
me>>JURONG/SINGAPORE</ram:Name></ram:UnloadingBaseportSPSLocation></ram:ExaminationSPSEvent></ram:O
ccurrenceSPSLocation></ram:ExaminationSPSEvent></ram:MainCarriageSPSTransportMovement></ram:ID>>4378</r
am:ID></ram:ModeCode>>1</ram:ModeCode></ram:UsedSPSTransportMeans></ram:Name>>ECCLLES THE
BRAVE</ram:Name></ram:UsedSPSTransportMeans></ram:MainCarriageSPSTransportMovement></ram:IncludedSP
SConsignmentItem></ram:IncludedSPSTradeLineItem></ram:SequenceNumeric>>1</ram:SequenceNumeric></ram:De
scription>>WHEAT</ram:Description></ram:NetWeightMeasure
unitCode="TNE">>1.000</ram:NetWeightMeasure></ram:GrossWeightMeasure
unitCode="TNE">>1.000</ram:GrossWeightMeasure></ram:PhysicalSPSPackage></ram:LevelCode>>1</ram:LevelCod
e></ram:TypeCode>>VR</ram:TypeCode></ram:ItemQuantity>>0</ram:ItemQuantity></ram:PhysicalSPSShippingM
arks></ram:Marking>>mark
1</ram:Marking></ram:PhysicalSPSShippingMarks></ram:PhysicalSPSPackage></ram:OriginSPSCountry></ram:I
D>>AU</ram:ID></ram:Name>>Australia</ram:Name></ram:OriginSPSCountry></ram:IncludedSPSTradeLineItem
></ram:IncludedSPSConsignmentItem></rsm:SPSConsignment></rsm:SPSCertificate></certificates></GetCertific
ateDataResult>
</GetCertificateDataResponse>
</soap:Body>
</soap:Envelope>

```

When getting a 2.8 version certificate, the response returned by the E-cert SOAP web service would look similar to the following.

```

<?xml version="1.0" encoding="utf-8"?>
<soap:Envelope xmlns:soap="http://schemas.xmlsoap.org/soap/envelope/" xmlns:xsi="http://www.w3.org/2001/XMLSchema-instance"
xmlns:xsd="http://www.w3.org/2001/XMLSchema">
  <soap:Body>
    <GetCertificateDataResponse xmlns="http://aqis.gov.au/ecertsoap/">
      <GetCertificateDataResult></?xml version="1.0" encoding="UTF-8"?></certificates></certificate no="2055242"
status="Approved"></issue_date day="3" month="3" year="2005" hour="23" minute="47" second="53">2005-03-03
23:47:53</issue_date></exporting_country
country_code="AU"></country_name>>Australia</country_name></competent_authority>>Department of Agriculture,
Fisheries and Forestry</competent_authority></exporting_country></importing_country
country_code="SG"></country_name>>SINGAPORE</country_name></importing_country></title></text
language="en"></OFFICIAL CERTIFICATE WITH RESPECT TO MEAT, MEAT PRODUCTS AND EDIBLE OFFAL
</text></title></exporter id="99999"></name>> AAA DAFF TEST EXPORTER </name></address>>EDMUND
BARTON BUILDING, BROUGHTON STREET, BARTON, CANBERRA NSW 2600,
Australia</address></exporter></consignee
id="34535345345"></name>>FDGFDG</name></address>>DFGDFG, DFGFD DFG,
SINGAPORE</address></consignee></departure_date day="4" month="3" year="2005">2005-03-
04</departure_date></loading_port country_code="AU"
city_code="AUSYD"></SYDNEY</loading_port></final_destination>>UTTYUT</final_destination></inspection_port
country_code="SG" city_code="SGAYC"></PULAN AYER CHAWAN</inspection_port></discharge_port country_code="SG"
city_code="SGAYC"></PULAN AYER CHAWAN</discharge_port></transport
mode="Sea"></craft>>DSFSDF</craft></conveyance_ref>>SDFSD</conveyance_ref></transport></product
item="1"></description>>22 X 33 KGM BULK PACK CHILLED BONE IN BEEF SIDE BULK
PACK</description></species>>BOVINE</species></origin_source country="Australia" country_code="AU"
/></classification type="Category Code">1000</classification></classification type="Product Code">>MCA
BP</classification></package level="1" package_type="BULK PACK" type_code="BP" package_number="22">22 BULK
PACK</package></weight type="NET" amount="101.000" unit="KGM" unit_name="KILOGRAM">101.000 KILOGRAM
NET</weight></processing_type code="PK">Packing</processing_type></dates></start_date
day="1" month="3" year="2005">2005-03-01</start_date></end_date day="1" month="3" year="2005">2005-03-

```

```

01</end_date></dates></premis id=" 77" /></processing></processing_type
code="SL"></Slaughter</processing_type></premis id=" 77" /></dates></start_date day="1" month="3"
year="2004"></start_date></end_date day="1" month="3" year="2005"></2005-03-
01</end_date></dates></processing></product></approval type="Certificate
Authentication"></declaration></code></E171</code></statement language="en"></I hereby certify that the meat
specified above has been examined and found, by ante-mortem and post-mortem veterinary inspection, to be free from disease and
suitable in every way for human consumption and that no injurious ingredient has been used in its
preparation.</statement></declaration></code></E171</code></statement
language="en"></Slaughter Dates 1ST MARCH 2004 TO 1ST MARCH 2005
</statement></declaration></code></198</code></statement language="en"></I certify that
Australia has been free from Foot and Mouth Disease and Rinderpest for six months immediately prior to the slaughter and export of the
animals and no contamination took place prior to export. Australia has been free from Bovine Spongiform Encephalopathy for six years
prior to the date of slaughter and the date of export of the product to Singapore. The animals from which the meat covered by this
certificate is derived were slaughtered between the dates of 1-MAR-2004 and 1-MAR-
2005</statement></declaration></name></Ann
Mcdonald</name></qualifications></Bvsc</qualifications></role></Official
Veterinarian</role></location></CANBERRA AUSTRALIAN CAPITAL TERRITORY </location></date day="4" month="3"
year="2005"></2005-03-04</date></approval></certificate></certificates></GetCertificateDataResult>
</GetCertificateDataResponse>
</soap:Body>
</soap:Envelope>

```

3.2.4 AcknowledgeReceiptOf

This method allows the importing country to acknowledge the receipt of the certificate downloaded via a call to the *GetCertificateData* method.

3.2.4.1 Parameters

login Login ID provided to the user by the E-cert Administrator.
password The password for the login ID provided by the E-cert Administrator.
certificateNumber Identifies the certificate to be acknowledged.

3.2.4.2 Response Values

No values are returned in the response to the method call.

3.2.4.3 Example

A typical request to use this method would look as follows:

```
POST /ecertsoap/ecertsoap.asmx HTTP/1.1
Host: apps.daff.aqis.gov.au
Content-Type: text/xml; charset=utf-8
Content-Length: length
SOAPAction: "http://aqis.gov.au/ecertsoap/AcknowledgeReceiptOf"
```

```
<?xml version="1.0" encoding="utf-8"?>
<soap:Envelope xmlns:xsi="http://www.w3.org/2001/XMLSchema-instance" xmlns:xsd="http://www.w3.org/2001/XMLSchema"
xmlns:soap="http://schemas.xmlsoap.org/soap/envelope/">
  <soap:Body>
    <AcknowledgeReceiptOf xmlns="http://aqis.gov.au/ecertsoap/">
      <login>GregR</login>
      <password>password</password>
      <certificateNumber>2055242</certificateNumber>
    </AcknowledgeReceiptOf>
  </soap:Body>
</soap:Envelope>
```

The response returned by the E-cert SOAP web service would look similar to the following.

```
<?xml version="1.0" encoding="utf-8"?>
<soap:Envelope xmlns:soap="http://schemas.xmlsoap.org/soap/envelope/" xmlns:xsi="http://www.w3.org/2001/XMLSchema-instance"
xmlns:xsd="http://www.w3.org/2001/XMLSchema">
  <soap:Body>
    <AcknowledgeReceiptOfResponse xmlns="http://aqis.gov.au/ecertsoap/">
  </soap:Body>
</soap:Envelope>
```

3.2.5 UpdateCertificateStatus

This method allows the importing country to change the status of an E-cert certificate.

3.2.5.1 Parameters

login	Login ID provided to the user by the E-cert Administrator.
password	The password for the login ID provided by the E-cert Administrator.
certificateNumber	Identifies the certificate to be updated.
newStatus	The new status of the certificate. Valid values for this parameter are "Accepted", "Detained", "Request Replacement" or "Rejected".
reason	The reason the status is being updated. A reason must be provided if the status of the E-cert certificate is being updated to "Detained", "Request Replacement" or "Rejected".

3.2.5.2 Response Values

No values are returned in the response to the method call.

3.2.5.3 Example

A typical request to use this method would look as follows:

```
POST /ecertsoap/ecertsoap.asmx HTTP/1.1
Host:apps.daff.gov.au
Content-Type: text/xml; charset=utf-8
Content-Length: length
SOAPAction: "http://aqis.gov.au/ecertsoap/UpdateCertificateStatus"

<?xml version="1.0" encoding="utf-8"?>
<soap:Envelope xmlns:xsi="http://www.w3.org/2001/XMLSchema-instance" xmlns:xsd="http://www.w3.org/2001/XMLSchema"
xmlns:soap="http://schemas.xmlsoap.org/soap/envelope/">
  <soap:Body>
    <UpdateCertificateStatus xmlns="http://aqis.gov.au/ecertsoap/">
      <login>GregR</login>
      <password>password</password>
      <certificateNumber>2055242</certificateNumber>
      <newStatus>Detained</newStatus>
      <reason>Certificate detained pending further inspection of the goods</reason>
    </UpdateCertificateStatus>
  </soap:Body>
</soap:Envelope>
```

The response returned by the E-cert SOAP web service would look similar to the following.

```
<?xml version="1.0" encoding="utf-8"?>
<soap:Envelope xmlns:soap="http://schemas.xmlsoap.org/soap/envelope/" xmlns:xsi="http://www.w3.org/2001/XMLSchema-instance"
xmlns:xsd="http://www.w3.org/2001/XMLSchema">
  <soap:Body>
    <UpdateCertificateStatusResponse xmlns="http://aqis.gov.au/ecertsoap/">
  </soap:Body>
</soap:Envelope>
```

3.3 Error Messages Returned By the E-Cert SOAP Web Server Methods

Error messages returned by the E-cert SOAP web service will be returned as SOAP faults. Error messages will be similar to the following:

```
<?xml version="1.0" encoding="utf-8"?>
<soap:Envelope xmlns:soap="http://schemas.xmlsoap.org/soap/envelope/" xmlns:xsi="http://www.w3.org/2001/XMLSchema-instance"
xmlns:xsd="http://www.w3.org/2001/XMLSchema">
  <soap:Body>
    <soap:Fault>
      <faultcode>soap:Client</faultcode>
      <faultstring>The credentials provided are not valid</faultstring>
      <faultactor>https://apps.daff.gov.au/ecertsoap/ecertsoap.asmx</faultactor>
      <detail/>
    </soap:Fault>
  </soap:Body>
</soap:Envelope>
```

A **faultcode** of **soap:Client** indicates that the error is because of incorrect parameters supplied to the method call.

A **faultcode** of **soap:Server** indicates that there is a problem with the E-cert system.

If a **faultcode** of **soap:Client** is indicated the **faultstring** element will have one of the following values:

The credentials provided are not valid

This message indicates that the login/password combination provided is not valid.

The credentials provided do not have the necessary permissions to download E-cert certificates

This message indicates that the login does not have the necessary privileges to download E-cert certificates.

The credentials provided do not have enough privileges to update the certificate

This message indicates that the login does not have the necessary privileges to update the status of E-cert certificates.

Either the certificate does not exist or the credentials provided do not have access to this certificate

This message indicates that the specified E-cert certificate does not exist or that the login does not have access to the specified E-cert certificate.

Invalid status 'newStatus' provided

This message indicates that an incorrect status has been provided when requesting an update to an E-cert certificate. Valid values for the new certificate status are "Accepted", "Detained", "Rejected" and "Request Replacement".

A reason must be provided when changing the certificate status to 'newStatusName'

This message indicates that a reason has not been provided when requesting that the status of an E-cert certificate be changed to “Detained”, “Rejected” and “Request Replacement”.

Certificate Status cannot be changed from 'currentStatusName' to 'newStatusName'

This message indicates that an invalid change of status has been requested. Valid changes are indicated in the table below. The numbers are the UN code for the statuses.

	Accepted (100)	Detained (26)	Rejected (41)	Request Replacement (17)
Approved (39)	✓	✓	✓	✓
Accepted (100)	✗	✗	✗	✓
Detained (26)	✓	✗	✓	✓
Rejected (41)	✓	✗	✗	✓
Request Replacement (17)	✗	✗	✗	✗

In the table above the statuses reading down the first column indicate the current status of the E-cert certificate. The statuses across the top of the table indicate the status to which the E-cert certificate is being changed.

4 E-cert SMTP Interface

The E-cert system offers an SMTP interface allowing importing countries to automate the inclusion of Department of Agriculture E-cert certificates into their own import management system. The E-cert SMTP interface involves the transmission of SMTP messages between export and import authorities. The content of the SMTP messages are encrypted XML documents and allow for the same functionality included in the E-cert SOAP interface described in section 3 **E-cert SOAP Interface** above.

A description of the different XML documents and the flow of messages are provided in the following sections.

4.1 Configuration Details

The Department of Agriculture E-cert system sends and receives SMTP messages through the following emails addresses:

Production environment ecert@mgate.daff.gov.au

Test environment ecert@mgatetest.daff.gov.au

To use the E-cert SMTP interface an import authority must have a digital certificate that can be used to encrypt emails. The digital certificate must identify the email address that will be used by the import authority to receive and send E-cert SMTP messages. The email address must be identified in either the digital certificate's Subject Name or Email address. A digital certificate is required for each environment in which the E-cert SMTP interface will be used.

The Department of Agriculture's digital certificates used for the E-cert SMTP interface will be provided upon request to the E-cert Administrator (ecertadministrator@daff.gov.au).

4.2 E-cert Message Conversation

A **conversation** between two parties is defined as the transmission of XML documents (messages) via SMTP. A conversation has a defined start and end.

4.3 E-cert Message Conversation Using UN E-cert Schema

For the UN E-cert schema, a conversation between two parties is started when any of the following messages is sent:

SPSCertificate message;

SPSAcknowledgement message with a status other than 73 (Confirmed);

The conversation is ended by the transmission of a **SPSAcknowledgement** message with a status of 73. Every conversation will have two messages.

4.3.1 SPSCertificate message

4.3.1.1 Purpose

This message allows an export authority to notify an import authority that an E-cert certificate has been approved. This message contains all details regarding the certificate.

4.3.1.2 Schema

Please refer to the UN/CEFACT XML schema for SPSCertificate (http://www.unece.org/cefact/xml_schemas/index).

4.3.2 SPSAcknowledgement message to change a status

4.3.2.1 Purpose

This message allows either the export or import authority to request a revision to the status of an export health certificate. The **SPSAcknowledgement** message details the new status of the E-cert certificate and, if required, the reason for the revision of status.

4.3.2.2 Schema

Please refer to the UN/CEFACT XML schema for SPSAcknowledgement (http://www.unece.org/cefact/xml_schemas/index).

The elements are used as follows:

Element Name	Business Term
IssueDateTime	The UTC date and time that this acknowledgement message was issued.
StatusCode	The status to which the E-cert certificate is being revised: 17 Requested (request replacement) 26 Subject to clearing (detained) 40 Withdrawn (revoked) 41 Rejected 100 Satisfied (accepted)
ReasonInformation	This element provides the ability to document the reason the revision is being requested. It is needed when status of the E-cert certificate is being updated to "Detained", "Request Replacement" or "Rejected".
ReferenceSPSReferencedDocument	N/A
IssueDateTime	IssueDateTime of the E-cert message that is being revised.
TypeCode	(Department of Agriculture E-cert does not use this element)
RelationshipTypeCode	ACE - related document number (this document)
ID	ID of the E-cert message that is being revised.

4.3.2.3 Example

To request that certificate 1332624 issued on 2013-05-22T23:22:45 has its status changed to “detained”:

```
<?xml version="1.0" encoding="utf-8" ?>
<rsm:SPSAcknowledgement
  xmlns:rsm="urn:un:unece:unefact:data:standard:SPSAcknowledgement:7"
  xmlns:xsi="http://www.w3.org/2001/XMLSchema-instance"
  xmlns:xsd="http://www.w3.org/2001/XMLSchema"
  xmlns:ram="urn:un:unece:unefact:data:standard:ReusableAggregateBusinessInformationEntity:11">
  <rsm:SPSAcknowledgementDocument>
    <ram:IssueDateTime>2013-06-05T04:55:59</ram:IssueDateTime>
    <ram:StatusCode>26</ram:StatusCode>
    <ram:ReasonInformation languageID="en">Detained for more testing</ram:ReasonInformation>
    <ram:ReferenceSPSReferencedDocument>
      <ram:IssueDateTime>2013-05-22T23:22:45</ram:IssueDateTime>
      <ram:RelationshipTypeCode>ACE</ram:RelationshipTypeCode>
      <ram:ID>1332624</ram:ID>
    </ram:ReferenceSPSReferencedDocument>
  </rsm:SPSAcknowledgementDocument>
</rsm:SPSAcknowledgement>
```

4.3.3 SPSAcknowledgement message to accept or reject a message

4.3.3.1 Purpose

This message allows one party to notify another party that a previous message has been processed. The **SPSAcknowledgement** message also gives the ability to inform the party that there were problems with the original message.

4.3.3.2 Schema

Please refer to the UN/CEFACT XML schema for SPSAcknowledgement (http://www.unece.org/cefact/xml_schemas/index).

The elements are used as follows:

Element Name	Business Term
IssueDateTime	The UTC date and time that this acknowledgement message was issued.
StatusCode	Processing outcome: 41 Rejected 100 Satisfied (accepted)
ReasonInformation	Provides details of any messages that may be appropriate. At least one message is required if the processing outcome attribute has a value of 'Reject'.
ReferenceSPSReferencedDocument	N/A
IssueDateTime	IssueDateTime of the E-cert message that is being acknowledged.
TypeCode	(Department of Agriculture E-cert does not use this element)
RelationshipTypeCode	ACE - related document number (this

	document)
ID	ID of the E-cert message that is being acknowledged.

4.3.3.3 Example

To say that the message for certificate 1332624 issued on 2013-05-22T23:22:45 has been satisfactorily processed.

```
<?xml version="1.0" encoding="utf-8" ?>
<rsm:SPSAcknowledgement
  xmlns:rsm="urn:un:unece:unefact:data:standard:SPSAcknowledgement:7"
  xmlns:xsi="http://www.w3.org/2001/XMLSchema-instance"
  xmlns:xsd="http://www.w3.org/2001/XMLSchema"
  xmlns:ram="urn:un:unece:unefact:data:standard:ReusableAggregateBusinessInformationEntity:11">
  <rsm:SPSAcknowledgementDocument>
    <ram:IssueDateTime>2013-06-05T04:08:07</ram:IssueDateTime>
    <ram:StatusCode>100</ram:StatusCode>
    <ram:ReasonInformation languageID="EN">testing test interface</ram:ReasonInformation>
    <ram:ReferenceSPSReferencedDocument>
      <ram:IssueDateTime>2013-05-22T23:22:45</ram:IssueDateTime>
      <ram:RelationshipTypeCode>ACE</ram:RelationshipTypeCode>
      <ram:ID>1332624</ram:ID>
    </ram:ReferenceSPSReferencedDocument>
  </rsm:SPSAcknowledgementDocument>
</rsm:SPSAcknowledgement>
```

4.3.4 SPSAcknowledgement message to acknowledge a message

4.3.4.1 Purpose

To notify another party that a previous message has been received. This message is used to end a conversation between two parties. Every E-cert message that is sent, except for an **SPSAcknowledgement** message with status 73, must result in an **SPSAcknowledgement** message with status 73.

4.3.4.2 Schema

Please refer to the UN/CEFACT XML schema for SPSAcknowledgement (http://www.unece.org/cefact/xml_schemas/index).

The elements are used as follows:

Element Name	Business Term
IssueDateTime	The UTC date and time that this acknowledgement message was issued.
StatusCode	73 Confirmed (acknowledged)
ReasonInformation	(value not needed)
ReferenceSPSReferencedDocument	N/A
IssueDateTime	IssueDateTime of the E-cert message that is being receipted.
TypeCode	(Department of Agriculture E-cert does not use this element)

RelationshipTypeCode	ACE - related document number (this document)
ID	ID of the E-cert message that is being received (HCNbr).

4.3.4.3 Example

If an export authority sends the following certificate message to an import authority:

```
<?xml version="1.0" encoding="UTF-8" ?>
<certificates>
  <rsm:SPSCertificate
    xmlns:rsm="urn:un:unece:unefact:data:standard:SPSCertificate:7"
    xmlns:xsi="http://www.w3.org/2001/XMLSchema-instance"
    xmlns:xsd="http://www.w3.org/2001/XMLSchema"
    xmlns:ram="urn:un:unece:unefact:data:standard:ReusableAggregateBusinessInformationEntity:11">
    <rsm:SPSExchangedDocument>
      <ram:Name languageID="en">CERTIFICATE AS TO CONDITION</ram:Name>
      <ram:ID>1332655</ram:ID>
      <ram:TypeCode>851</ram:TypeCode>
      <ram:StatusCode>39</ram:StatusCode>
      <ram:IssueDateTime>2013-06-05T07:05:48</ram:IssueDateTime>
      <ram:IssuerSPSParty>
        <ram:Name>Department of Agriculture, Fisheries and Forestry</ram:Name>
      </ram:IssuerSPSParty>
      <ram:ReferenceSPSReferencedDocument>
        <ram:RelationshipTypeCode>ANE</ram:RelationshipTypeCode>
        <ram:ID>11654</ram:ID>
      </ram:ReferenceSPSReferencedDocument>
      <ram:SignatorySPSAuthentication>
        <ram:ActualDateTime>2013-06-05T00:00:00</ram:ActualDateTime>
        <ram:ProviderSPSParty>
          <ram:Name>Official Veterinarian</ram:Name>
          <ram:RoleCode>PQ</ram:RoleCode>
          <ram:SpecifiedSPSPerson>
            <ram:Name>Laura Timmins</ram:Name>
            <ram:AttainedSPSQualification>
              <ram:Name>BVSC</ram:Name>
            </ram:AttainedSPSQualification>
          </ram:SpecifiedSPSPerson>
        </ram:ProviderSPSParty>
        <ram:IncludedSPSClause>
          <ram:Content languageID="en">I hereby certify that to the best of my knowledge the conditions or restrictions
            applicable under the particular inspection system prescribed in Regulations or Orders under the Export Control Act 1982
            have been complied with in respect of the prescribed goods described above, being goods that are: 1. In sound condition
            2. Of Australian Origin</ram:Content>
        </ram:IncludedSPSClause>
        </ram:SignatorySPSAuthentication>
      </ram:SPSExchangedDocument>
    <rsm:SPSConsignment>
      <ram:ExportExitDateTime>2013-08-31T00:00:00</ram:ExportExitDateTime>
      <ram:ConsignorSPSParty>
        <ram:ID>99999</ram:ID>
        <ram:Name>AAA DAFF TEST EXPORTER</ram:Name>
        <ram:RoleCode>EX</ram:RoleCode>
        <ram:SpecifiedSPSAddress>
          <ram:PostcodeCode>9999</ram:PostcodeCode>
          <ram:LineOne>DAFF BIOSECURITY</ram:LineOne>
          <ram:LineTwo>SERVICE TESTING SYSTEM</ram:LineTwo>
          <ram:CityName>XXX</ram:CityName>
          <ram:CountryID>AU</ram:CountryID>
          <ram:CountryName>Australia</ram:CountryName>
          <ram:CountrySubDivisionID>TAS</ram:CountrySubDivisionID>
        </ram:SpecifiedSPSAddress>
      </ram:ConsignorSPSParty>
    </rsm:SPSConsignment>
  </rsm:SPSCertificate>
</certificates>
```

```

</ram:SpecifiedSPSAddress>
</ram:ConsignorSPSParty>
<ram:ConsigneeSPSParty>
  <ram:Name>GROMIT THE IMPORTER</ram:Name>
  <ram:RoleCode>CN</ram:RoleCode>
  <ram:SpecifiedSPSAddress>
    <ram:PostcodeCode>89038</ram:PostcodeCode>
    <ram:LineOne>62 WEST WALLABY STREET</ram:LineOne>
    <ram:CityName>JURONG</ram:CityName>
    <ram:CountryID>SG</ram:CountryID>
    <ram:CountryName>SINGAPORE</ram:CountryName>
  </ram:SpecifiedSPSAddress>
</ram:ConsigneeSPSParty>
<ram:ExportSPSCountry>
  <ram:ID>AU</ram:ID>
  <ram:Name>Australia</ram:Name>
</ram:ExportSPSCountry>
<ram>LoadingBaseportSPSLocation>
  <ram:ID>AUCMD</ram:ID>
  <ram:Name>COOTAMUNDRA</ram:Name>
</ram>LoadingBaseportSPSLocation>
<ram:ImportSPSCountry>
  <ram:ID>SG</ram:ID>
  <ram:Name>SINGAPORE</ram:Name>
</ram:ImportSPSCountry>
<ram:ConsigneeReceiptSPSLocation>
  <ram:Name>JURONG</ram:Name>
</ram:ConsigneeReceiptSPSLocation>
<ram:UnloadingBaseportSPSLocation>
  <ram:ID>SGJUR</ram:ID>
  <ram:Name>JURONG/SINGAPORE</ram:Name>
</ram:UnloadingBaseportSPSLocation>
<ram:ExaminationSPSEvent>
  <ram:OccurrenceSPSLocation>
    <ram:ID>SGJUR</ram:ID>
    <ram:Name>JURONG/SINGAPORE</ram:Name>
  </ram:OccurrenceSPSLocation>
</ram:ExaminationSPSEvent>
<ram>MainCarriageSPSTransportMovement>
  <ram:ID>4378</ram:ID>
  <ram:ModeCode>1</ram:ModeCode>
  <ram:UsedSPSTransportMeans>
    <ram:Name>ECCLES THE BRAVE</ram:Name>
  </ram:UsedSPSTransportMeans>
</ram>MainCarriageSPSTransportMovement>
<ram>IncludedSPSConsignmentItem>
  <ram>IncludedSPSTradeLineItem>
    <ram:SequenceNumeric>1</ram:SequenceNumeric>
    <ram>Description>WHEAT</ram>Description>
    <ram:NetWeightMeasure unitCode="TNE">1.000</ram:NetWeightMeasure>
    <ram:GrossWeightMeasure unitCode="KGM">1200.000</ram:GrossWeightMeasure>
    <ram:PhysicalSPSPackage>
      <ram:LevelCode>1</ram:LevelCode>
      <ram>TypeCode>VR</ram>TypeCode>
      <ram:ItemQuantity>0</ram:ItemQuantity>
      <ram:PhysicalSPSShippingMarks>
        <ram:Marking>mark 1</ram:Marking>
      </ram:PhysicalSPSShippingMarks>
    </ram:PhysicalSPSPackage>
    <ram:OriginSPSCountry>
      <ram:ID>AU</ram:ID>
      <ram:Name>Australia</ram:Name>
    </ram:OriginSPSCountry>
  </ram>IncludedSPSTradeLineItem>
</ram>IncludedSPSConsignmentItem>
</rsm:SPSConsignment>
</rsm:SPSCertificate>

```

</certificates>

The import authority would respond by sending the following **SPSAcknowledgement** message to the export authority that sent the original message:

```
<?xml version="1.0" encoding="utf-8" ?>
<rsm:SPSAcknowledgement
  xmlns:rsm="urn:un:unece:unefact:data:standard:SPSAcknowledgement:7"
  xmlns:xsi="http://www.w3.org/2001/XMLSchema-instance"
  xmlns:xsd="http://www.w3.org/2001/XMLSchema"
  xmlns:ram="urn:un:unece:unefact:data:standard:ReusableAggregateBusinessInformationEntity:11">
  <rsm:SPSAcknowledgementDocument>
    <ram:IssueDateTime>2013-06-05T07:06:46</ram:IssueDateTime>
    <ram:StatusCode>73</ram:StatusCode>
    <ram:ReferenceSPSReferencedDocument>
      <ram:IssueDateTime>2013-06-05T07:05:48</ram:IssueDateTime>
      <ram:RelationshipTypeCode>ACE</ram:RelationshipTypeCode>
      <ram:ID>1332655</ram:ID>
    </ram:ReferenceSPSReferencedDocument>
  </rsm:SPSAcknowledgementDocument>
</rsm:SPSAcknowledgement>
```

If after inspecting the consignment the import authority needs a new certificate the following **SPSAcknowledgement** message would be sent to the export authority:

```
<?xml version="1.0" encoding="utf-8" ?>
<rsm:SPSAcknowledgement
  xmlns:rsm="urn:un:unece:unefact:data:standard:SPSAcknowledgement:7"
  xmlns:xsi="http://www.w3.org/2001/XMLSchema-instance"
  xmlns:xsd="http://www.w3.org/2001/XMLSchema"
  xmlns:ram="urn:un:unece:unefact:data:standard:ReusableAggregateBusinessInformationEntity:11">
  <rsm:SPSAcknowledgementDocument>
    <ram:IssueDateTime>2013-06-05T07:19:56</ram:IssueDateTime>
    <ram:StatusCode>17</ram:StatusCode>
    <ram:ReasonInformation languageID="en">Consignee Reference Number is required</ram:ReasonInformation>
    <ram:ReferenceSPSReferencedDocument>
      <ram:IssueDateTime>2013-06-05T07:05:48</ram:IssueDateTime>
      <ram:RelationshipTypeCode>ACE</ram:RelationshipTypeCode>
      <ram:ID>1332655</ram:ID>
    </ram:ReferenceSPSReferencedDocument>
  </rsm:SPSAcknowledgementDocument>
</rsm:SPSAcknowledgement>
```

The export authority would respond by sending the following **SPSAcknowledgement** message to the import authority that sent the change of status request message:

```
<?xml version="1.0" encoding="utf-8" ?>
<rsm:SPSAcknowledgement
  xmlns:rsm="urn:un:unece:unefact:data:standard:SPSAcknowledgement:7"
  xmlns:xsi="http://www.w3.org/2001/XMLSchema-instance"
  xmlns:xsd="http://www.w3.org/2001/XMLSchema"
  xmlns:ram="urn:un:unece:unefact:data:standard:ReusableAggregateBusinessInformationEntity:11">
  <rsm:SPSAcknowledgementDocument>
    <ram:IssueDateTime>2013-06-05T07:22:12</ram:IssueDateTime>
    <ram:StatusCode>73</ram:StatusCode>
    <ram:ReferenceSPSReferencedDocument>
      <ram:IssueDateTime>2013-06-05T07:19:56</ram:IssueDateTime>
      <ram:RelationshipTypeCode>ACE</ram:RelationshipTypeCode>
      <ram:ID>1332655</ram:ID>
    </ram:ReferenceSPSReferencedDocument>
  </rsm:SPSAcknowledgementDocument>
</rsm:SPSAcknowledgement>
```

This is then followed by an *SPSAcknowledgement* message with a status of 100 to the import authority to indicate that the change of status request has been satisfactorily processed:

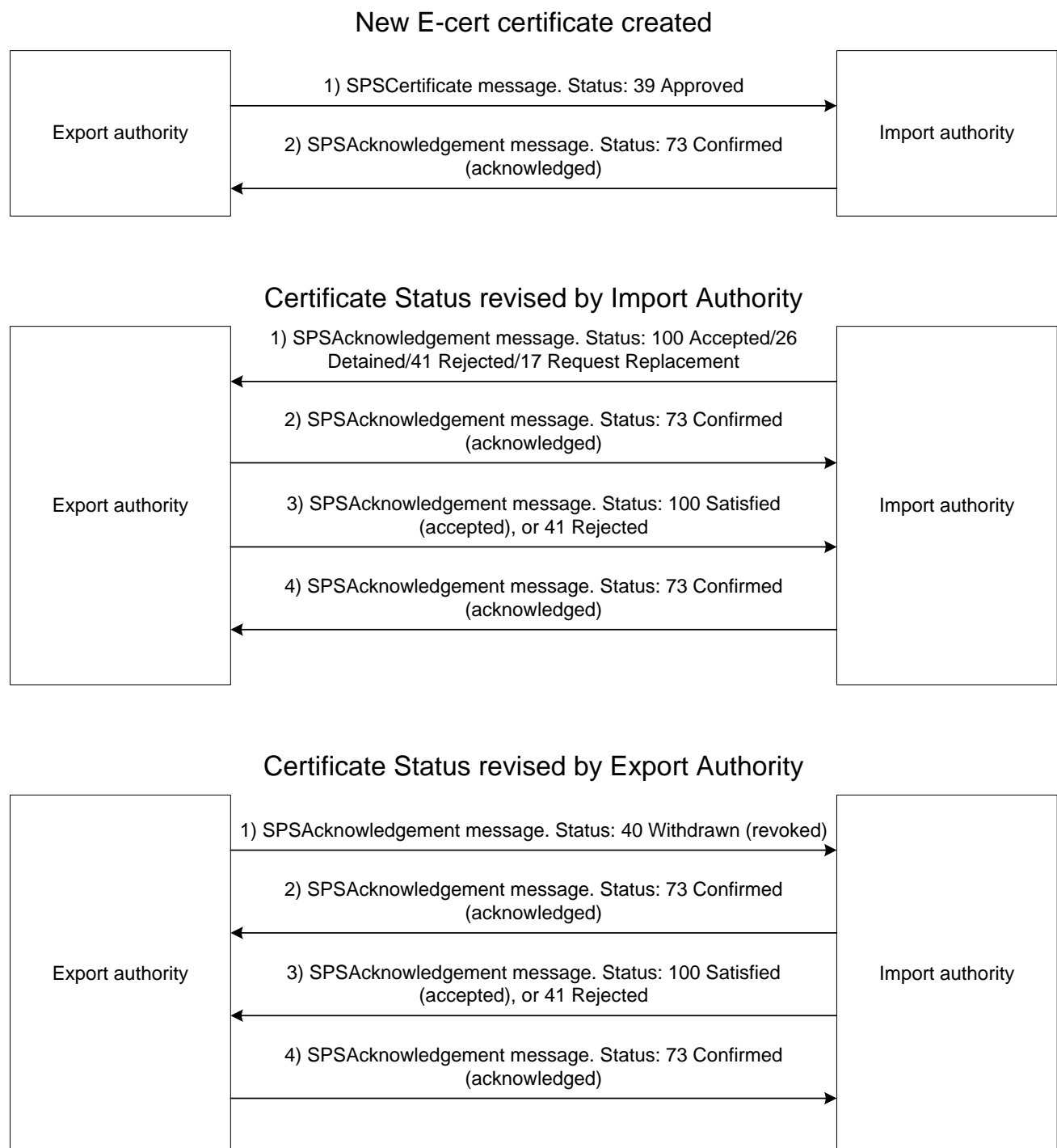
```
<?xml version="1.0" encoding="utf-8" ?>
<rsm:SPSAcknowledgement
  xmlns:rsm="urn:un:unece:uncefact:data:standard:SPSAcknowledgement:7"
  xmlns:xsi="http://www.w3.org/2001/XMLSchema-instance"
  xmlns:xsd="http://www.w3.org/2001/XMLSchema"
  xmlns:ram="urn:un:unece:uncefact:data:standard:ReusableAggregateBusinessInformationEntity:11">
  <rsm:SPSAcknowledgementDocument>
    <ram:IssueDateTime>2013-06-05T07:22:13</ram:IssueDateTime>
    <ram:StatusCode>100</ram:StatusCode>
    <ram:ReferenceSPSReferencedDocument>
      <ram:IssueDateTime>2013-06-05T07:19:56</ram:IssueDateTime>
      <ram:RelationshipTypeCode>ACE</ram:RelationshipTypeCode>
      <ram:ID>1332655</ram:ID>
    </ram:ReferenceSPSReferencedDocument>
  </rsm:SPSAcknowledgementDocument>
</rsm:SPSAcknowledgement>
```

The import authority then acknowledges receiving the processing message to end the conversation:

```
<?xml version="1.0" encoding="utf-8"?>
<rsm:SPSAcknowledgement
  xmlns:rsm="urn:un:unece:uncefact:data:standard:SPSAcknowledgement:7"
  xmlns:xsi="http://www.w3.org/2001/XMLSchema-instance"
  xmlns:xsd="http://www.w3.org/2001/XMLSchema"
  xmlns:ram="urn:un:unece:uncefact:data:standard:ReusableAggregateBusinessInformationEntity:11">
  <rsm:SPSAcknowledgementDocument>
    <ram:IssueDateTime>2013-06-05T07:23:57</ram:IssueDateTime>
    <ram:StatusCode>73</ram:StatusCode>
    <ram:ReferenceSPSReferencedDocument>
      <ram:IssueDateTime>2013-06-05T07:22:13</ram:IssueDateTime>
      <ram:RelationshipTypeCode>ACE</ram:RelationshipTypeCode>
      <ram:ID>1332655</ram:ID>
    </ram:ReferenceSPSReferencedDocument>
  </rsm:SPSAcknowledgementDocument>
</rsm:SPSAcknowledgement>
```

4.3.5 E-cert message flow

The following diagram shows the flow of messages between export and import authorities.



4.4 E-cert Message Conversation Using E-cert 2.8 Schema

For E-cert version 2.8, a conversation between two parties is started when any of the following messages is sent:

certificate message;

revision message;

The conversation is ended by the transmission of a **receipt** message. Every conversation will have two messages.

4.4.1 certificate message

4.4.1.1 Purpose

This message allows an export authority to notify an import authority that an E-cert certificate has been approved. This message contains all details regarding the certificate.

4.4.1.2 Schema

For importing countries that use the old E-cert schema (version 2.8), please refer to the E-cert Data Specification document.

4.4.2 revision message

4.4.2.1 Purpose

This message allows either the export or import authority to request a revision to the status of an export health certificate. The **revision** message details the new status of the E-cert certificate and, if required, the reason for the revision of status.

4.4.2.2 Schema

```
<?xml version="1.0" encoding="UTF-8"?>
<xs:schema xmlns:xs="http://www.w3.org/2001/XMLSchema">
  <xs:element name="revision" type="revisionType">
    <xs:annotation>
      <xs:documentation>Provides ability to request a revision to the status of an E-cert certificate.</xs:documentation>
    </xs:annotation>
  </xs:element>
  <xs:complexType name="revisionType">
    <xs:sequence>
      <xs:element name="certificate_issue_date" type="dateTimeType">
        <xs:annotation>
          <xs:documentation>This element contains the issue_date of the E-cert certificate being revised.</xs:documentation>
        </xs:annotation>
      </xs:element>
      <xs:element name="revision_date" type="dateTimeType">
        <xs:annotation>
          <xs:documentation>This element provides the date and time (in UTC format) of the revision.</xs:documentation>
        </xs:annotation>
      </xs:element>
      <xs:element name="reason" minOccurs="0">
        <xs:annotation>
          <xs:documentation>This element provides the ability to document the reason the revision is being
requested.</xs:documentation>
        </xs:annotation>
        <xs:complexType>
          <xs:sequence>
            <xs:element name="translation" maxOccurs="unbounded">
              <xs:annotation>
                <xs:documentation>This element contains the text for the reason. The text can be provided in multiple
languages.</xs:documentation>
              </xs:annotation>
            </xs:element>
          </xs:sequence>
        </xs:complexType>
      </xs:element>
      <xs:extension base="xs:string">
        <xs:attribute name="language" use="required">

```



```

attribute</xs:documentation>
    <xs:annotation>
        <xs:documentation>Only codes provided in ISO 639 are allowed in this
    </xs:annotation>
    <xs:simpleType>
        <xs:restriction base="xs:string">
            <xs:minLength value="2"/>
            <xs:maxLength value="2"/>
        </xs:restriction>
    </xs:simpleType>
</xs:attribute>
</xs:extension>
</xs:simpleContent>
</xs:complexType>
</xs:element>
</xs:sequence>
</xs:complexType>
</xs:element>
</xs:sequence>
<xs:attribute name="no" use="required">
    <xs:annotation>
        <xs:documentation>The number of the E-cert certifice being revised</xs:documentation>
    </xs:annotation>
    <xs:simpleType>
        <xs:restriction base="xs:string">
            <xs:maxLength value="24"/>
        </xs:restriction>
    </xs:simpleType>
</xs:attribute>
<xs:attribute name="status" use="required">
    <xs:annotation>
        <xs:documentation>The status to which the E-cert certificate is being revised</xs:documentation>
    </xs:annotation>
    <xs:simpleType>
        <xs:restriction base="xs:string">
            <xs:enumeration value="Accepted"/>
            <xs:enumeration value="Rejected"/>
            <xs:enumeration value="Detained"/>
            <xs:enumeration value="Request Replacement"/>
            <xs:enumeration value="Revoked"/>
        </xs:restriction>
    </xs:simpleType>
</xs:attribute>
</xs:complexType>
<xs:complexType name="dateTimeType">
    <xs:simpleContent>
        <xs:extension base="xs:string">
            <xs:attribute name="day" use="required">
                <xs:simpleType>
                    <xs:restriction base="xs:integer">
                        <xs:minInclusive value="1"/>
                        <xs:maxInclusive value="31"/>
                    </xs:restriction>
                </xs:simpleType>
            </xs:attribute>
            <xs:attribute name="month" use="required">
                <xs:simpleType>
                    <xs:restriction base="xs:integer">
                        <xs:minInclusive value="1"/>
                        <xs:maxInclusive value="12"/>
                    </xs:restriction>
                </xs:simpleType>
            </xs:attribute>
            <xs:attribute name="year" use="required">
                <xs:simpleType>
                    <xs:restriction base="xs:integer">
                        <xs:minInclusive value="1000"/>
                        <xs:maxInclusive value="3000"/>
                    </xs:restriction>
                </xs:simpleType>
            </xs:attribute>
            <xs:attribute name="hour" use="required">
                <xs:simpleType>
                    <xs:restriction base="xs:integer">
                        <xs:minInclusive value="0"/>
                        <xs:maxInclusive value="23"/>
                    </xs:restriction>
                </xs:simpleType>
            </xs:attribute>
            <xs:attribute name="minute" use="required">

```

```

    <xs:simpleType>
      <xs:restriction base="xs:integer">
        <xs:minInclusive value="0"/>
        <xs:maxInclusive value="59"/>
      </xs:restriction>
    </xs:simpleType>
  </xs:attribute>
  <xs:attribute name="second" use="required">
    <xs:simpleType>
      <xs:restriction base="xs:integer">
        <xs:minInclusive value="0"/>
        <xs:maxInclusive value="59"/>
      </xs:restriction>
    </xs:simpleType>
  </xs:attribute>
</xs:extension>
</xs:simpleContent>
</xs:complexType>
</xs:schema>

```

4.4.3 processing_status message

4.4.3.1 Purpose

This message allows one party to notify another party that a previous message has been processed. The **processing_status** message also gives the ability to inform the party that there were problems with the original message.

The **processing_status** message does not allow the status of a certificate to be altered. The **revision** message is used to alter the status of a certificate.

4.4.3.2 Schema

```

<?xml version="1.0" encoding="utf-8"?>
<xs:schema xmlns:xs="http://www.w3.org/2001/XMLSchema">
  <xs:element name="processing_status" type="processingStatusType">
    <xs:annotation>
      <xs:documentation>To notify that a previous E-cert message has been processed.</xs:documentation>
    </xs:annotation>
  </xs:element>
  <xs:complexType name="processingStatusType">
    <xs:sequence>
      <xs:element name="original_issue_date" type="dateTimeType">
        <xs:annotation>
          <xs:documentation>The value for this element is taken from the issue_date element in the E-cert message that is being
acknowledged</xs:documentation>
        </xs:annotation>
      </xs:element>
      <xs:element name="issue_date" type="dateTimeType">
        <xs:annotation>
          <xs:documentation>The UTC date and time that this acknowledgement message was issued.</xs:documentation>
        </xs:annotation>
      </xs:element>
      <xs:element name="reason" minOccurs="0" maxOccurs="unbounded">
        <xs:annotation>
          <xs:documentation>Provides details of any messages that may be appropriate. At least one message is required if the
processing_outcome attribute has a value of 'Reject'</xs:documentation>
        </xs:annotation>
        <xs:complexType>
          <xs:sequence>
            <xs:element name="translation" maxOccurs="unbounded">
              <xs:complexType>
                <xs:simpleContent>
                  <xs:extension base="xs:string">
                    <xs:attribute name="language" use="required">
                      <xs:annotation>
                        <xs:documentation>Only codes provided in ISO 639 are allowed in this
attribute</xs:documentation>
                      </xs:annotation>
                    </xs:attribute>
                </xs:extension>
              </xs:complexType>
            </xs:element>
          </xs:sequence>
        </xs:complexType>
      </xs:element>
    </xs:sequence>
  </xs:complexType>
</xs:schema>

```

```

        </xs:attribute>
      </xs:extension>
    </xs:simpleContent>
  </xs:complexType>
</xs:element>
</xs:sequence>
</xs:complexType>
</xs:element>
</xs:sequence>
<xs:attribute name="no" use="required">
  <xs:annotation>
    <xs:documentation>The value for this attribute is taken from the same attribute in the message that is being
received</xs:documentation>
  </xs:annotation>
  <xs:simpleType>
    <xs:restriction base="xs:string">
      <xs:maxLength value="24"/>
    </xs:restriction>
  </xs:simpleType>
</xs:attribute>
<xs:attribute name="processing_outcome" use="required">
  <xs:simpleType>
    <xs:restriction base="xs:string">
      <xs:enumeration value="Accept"/>
      <xs:enumeration value="Reject"/>
    </xs:restriction>
  </xs:simpleType>
</xs:attribute>
</xs:complexType>
<xs:complexType name="dateTimeType">
  <xs:annotation>
    <xs:documentation>The dateTimeType represents a date time value in E-cert format. The top level element has a type of string and
gives the date and time in the format yyyy-mm-dd hh:mm:ss</xs:documentation>
  </xs:annotation>
  <xs:simpleContent>
    <xs:extension base="xs:string">
      <xs:attribute name="day" use="required">
        <xs:simpleType>
          <xs:restriction base="xs:integer">
            <xs:minInclusive value="1"/>
            <xs:maxInclusive value="31"/>
          </xs:restriction>
        </xs:simpleType>
      </xs:attribute>
      <xs:attribute name="month" use="required">
        <xs:simpleType>
          <xs:restriction base="xs:integer">
            <xs:minInclusive value="1"/>
            <xs:maxInclusive value="12"/>
          </xs:restriction>
        </xs:simpleType>
      </xs:attribute>
      <xs:attribute name="year" use="required">
        <xs:simpleType>
          <xs:restriction base="xs:integer">
            <xs:minInclusive value="1000"/>
            <xs:maxInclusive value="3000"/>
          </xs:restriction>
        </xs:simpleType>
      </xs:attribute>
      <xs:attribute name="hour" use="required">
        <xs:simpleType>
          <xs:restriction base="xs:integer">
            <xs:minInclusive value="0"/>
            <xs:maxInclusive value="23"/>
          </xs:restriction>
        </xs:simpleType>
      </xs:attribute>
      <xs:attribute name="minute" use="required">
        <xs:simpleType>
          <xs:restriction base="xs:integer">
            <xs:minInclusive value="0"/>
            <xs:maxInclusive value="59"/>
          </xs:restriction>
        </xs:simpleType>
      </xs:attribute>
      <xs:attribute name="second" use="required">
        <xs:simpleType>
          <xs:restriction base="xs:integer">
            <xs:minInclusive value="0"/>

```

```

        <xs:maxInclusive value="59"/>
      </xs:restriction>
    </xs:simpleType>
  </xs:attribute>
</xs:extension>
</xs:simpleContent>
</xs:complexType>
</xs:schema>

```

4.4.3.3 Example

If an export authority sends the following **certificate** message to an import authority

```

<?xml version="1.0" encoding="UTF-8"?>
<certificates>
  <certificate no="1323297" status="Approved">
    <issue_date day="2" month="2" year="2005" hour="14" minute="35" second="51">2005-02-02 14:35:51</issue_date>
    <exporting_country country_code="AU">
      <country_name>Australia</country_name>
      <competent_authority>Department of Agriculture, Fisheries and Forestry</competent_authority>
    </exporting_country>
    <importing_country country_code="SG">
      <country_name>SINGAPORE</country_name>
    </importing_country>
    <title>
      <text language="en">CERTIFICATE AS TO CONDITION</text>
    </title>
    <exporter id="99999">
      <name> AAA DAFF TEST EXPORTER </name>
      <address>DAFF BIOSECURITY, SERVICE TESTING SYSTEM, XXX TAS 9999</address>
    </exporter>
    <consignee>
      <name>GROMIT THE IMPORTER</name>
      <address>62 WEST WALLABY STREET, SINGAPORE, SINGAPORE</address>
    </consignee>
    <departure_date day="28" month="2" year="2005">2005-02-28</departure_date>
    <loading_port country_code="AU" city_code="AUCMD">COOTAMUNDRA</loading_port>
    <final_destination>SINGAPORE</final_destination>
    <inspection_port country_code="SG" city_code="SGJUR">JURONG/SINGAPORE</inspection_port>
    <discharge_port country_code="SG" city_code="SGJUR">JURONG/SINGAPORE</discharge_port>
    <transport mode="Sea">
      <craft>ECCLES THE BRAVE</craft>
      <conveyance_ref>4378</conveyance_ref>
    </transport>
    <product item="1">
      <description>WHEAT</description>
      <origin_source country="Australia" country_code="AU"/>
      <package level="1" package_type="BULK" type_code="VR" package_number="0">BULK</package>
      <weight type="NET" amount="1.000" unit="TNE" unit_name="TONNE (METRIC TON)">1.000 TONNE (METRIC TON)
NET</weight>
      <weight type="GROSS" amount="1200.000" unit="KGM" unit_name="kilogram">1200.000 kilogram GROSS</weight>
    </product>
    <approval type="Certificate Authentication">
      <declaration>
        <statement language="en">I hereby certify that to the best of my knowledge the conditions or restrictions applicable under the
particular inspection system prescribed in Regulations or Orders under the Export Control Act 1982 have been complied with in respect of the
prescribed goods described above, being goods that are: 1. In sound condition 2. Of Australian Origin</statement>
      </declaration>
      <name>Andy</name>
      <qualifications>Authorised Officer</qualifications>
      <role>Official Veterinarian</role>
      <date day="2" month="2" year="2005">2005-02-02</date>
    </approval>
  </certificate>
</certificates>

```

The import authority would respond with a **receipt** message. If after inspecting the consignment the import authority needs a new certificate the following **revision** message would be sent to the export authority:

```

<?xml version="1.0" encoding="UTF-8"?>
<revision no="1323297" status="Request Replacement">
  <certificate_issue_date day="2" month="2" year="2005" hour="14" minute="35" second="51">2005-02-02 14:35:51</certificate_issue_date>
  <revision_date day="4" month="2" year="2005" hour="13" minute="10" second="28">2005-02-04 13:10:28</revision_date>
  <reason>
    <translation language="en">Consignee Reference Number is required</translation>
  </reason>

```

</revision>

The export authority would respond with a **receipt** message. After processing the **revision** message the export authority would respond with a **processing_status** message similar to the following:

```
<?xml version="1.0" encoding="UTF-8"?>
<processing_status no="1323297" processing_outcome="Accept">
  <original_issue_date day="4" month="2" year="2005" hour="13" minute="10" second="28">2005-02-04 13:10:28</original_issue_date>
  <issue_date day="5" month="2" year="2005" hour="16" minute="30" second="20">2005-02-05 16:30:20</issue_date>
</processing_status>
```

4.4.4 receipt message

4.4.4.1 Purpose

To notify another party that a previous message has been received. This message is used to end a conversation between two parties. Every E-cert message that is sent, except for a **receipt** message, must result in a **receipt** message.

4.4.4.2 Schema

```
<?xml version="1.0" encoding="utf-8"?>
<xs:schema xmlns:xs="http://www.w3.org/2001/XMLSchema">
  <xs:element name="receipt">
    <xs:annotation>
      <xs:documentation>To notify of the receipt of a previous E-cert message</xs:documentation>
    </xs:annotation>
    <xs:complexType>
      <xs:complexContent>
        <xs:extension base="receiptType"/>
      </xs:complexContent>
    </xs:complexType>
  </xs:element>
  <xs:complexType name="receiptType">
    <xs:sequence>
      <xs:element name="original_issue_date" type="dateTimeType">
        <xs:annotation>
          <xs:documentation>The value for this element is taken from the issue_date element in the E-cert message that is
being received</xs:documentation>
        </xs:annotation>
      </xs:element>
      <xs:element name="issue_date" type="dateTimeType">
        <xs:annotation>
          <xs:documentation>The UTC date and time that this receipt message was issued</xs:documentation>
        </xs:annotation>
      </xs:element>
    </xs:sequence>
    <xs:attribute name="no" use="required">
      <xs:annotation>
        <xs:documentation>The value for this attribute is taken from the same attribute in the message that is being
received</xs:documentation>
      </xs:annotation>
      <xs:simpleType>
        <xs:restriction base="xs:string">
          <xs:maxLength value="24"/>
        </xs:restriction>
      </xs:simpleType>
    </xs:attribute>
  </xs:complexType>
  <xs:complexType name="dateTimeType">
    <xs:annotation>
      <xs:documentation>The dateTimeType represents a date time value in E-cert format. The top level element has a type of
string and gives the date and time in the format yyyy-mm-dd hh:mm:ss</xs:documentation>
    </xs:annotation>
    <xs:simpleContent>
      <xs:extension base="xs:string">
        <xs:attribute name="day" use="required">
          <xs:simpleType>
            <xs:restriction base="xs:integer">
              <xs:minInclusive value="1"/>
            </xs:restriction>
          </xs:simpleType>
        </xs:attribute>
      </xs:extension>
    </xs:simpleContent>
  </xs:complexType>
</xs:schema>
```

```

        <xs:maxInclusive value="31"/>
      </xs:restriction>
    </xs:simpleType>
  </xs:attribute>
  <xs:attribute name="month" use="required">
    <xs:simpleType>
      <xs:restriction base="xs:integer">
        <xs:minInclusive value="1"/>
        <xs:maxInclusive value="12"/>
      </xs:restriction>
    </xs:simpleType>
  </xs:attribute>
  <xs:attribute name="year" use="required">
    <xs:simpleType>
      <xs:restriction base="xs:integer">
        <xs:minInclusive value="1000"/>
        <xs:maxInclusive value="3000"/>
      </xs:restriction>
    </xs:simpleType>
  </xs:attribute>
  <xs:attribute name="hour" use="required">
    <xs:simpleType>
      <xs:restriction base="xs:integer">
        <xs:minInclusive value="0"/>
        <xs:maxInclusive value="23"/>
      </xs:restriction>
    </xs:simpleType>
  </xs:attribute>
  <xs:attribute name="minute" use="required">
    <xs:simpleType>
      <xs:restriction base="xs:integer">
        <xs:minInclusive value="0"/>
        <xs:maxInclusive value="59"/>
      </xs:restriction>
    </xs:simpleType>
  </xs:attribute>
  <xs:attribute name="second" use="required">
    <xs:simpleType>
      <xs:restriction base="xs:integer">
        <xs:minInclusive value="0"/>
        <xs:maxInclusive value="59"/>
      </xs:restriction>
    </xs:simpleType>
  </xs:attribute>
</xs:extension>
</xs:simpleContent>
</xs:complexType>
</xs:schema>

```

4.4.4.3 Example

If an export authority sends the following certificate message to an import authority

```

<?xml version="1.0" encoding="UTF-8"?>
<certificates>
  <certificate no="1323297" status="Approved">
    <issue_date day="2" month="2" year="2005" hour="14" minute="35" second="51">2005-02-02 14:35:51</issue_date>
    <related_document purpose="Supported by" no="1323296" type="Export Certificate">
      <document_date day="2" month="2" year="2005">2005-02-02</document_date>
    </related_document>
    <related_document purpose="Supports" no="7136" type="Export Permit"/>
    <exporting_country country_code="AU">
      <country_name>Australia</country_name>
      <competent_authority>Department of Agriculture, Fisheries and Forestry</competent_authority>
    </exporting_country>
    <importing_country country_code="SG">
      <country_name>SINGAPORE</country_name>
    </importing_country>
    <title>
      <text language="en">CERTIFICATE AS TO CONDITION</text>
    </title>
    <exporter id="99999">
      <name> AAA DAFF TEST EXPORTER </name>
      <address>DAFF BIOSECURITY, SERVICE TESTING SYSTEM, XXX TAS 9999</address>
    </exporter>
    <consignee>

```

```

    <name>GROMIT THE IMPORTER</name>
    <address>62 WEST WALLABY STREET, SINGAPORE, SINGAPORE</address>
  </consignee>
  <departure_date day="28" month="2" year="2005">2005-02-28</departure_date>
  <loading_port country_code="AU" city_code="AUCMD">COOTAMUNDRA</loading_port>
  <final_destination>SINGAPORE</final_destination>
  <inspection_port country_code="SG" city_code="SGJUR">JURONG/SINGAPORE</inspection_port>
  <discharge_port country_code="SG" city_code="SGJUR">JURONG/SINGAPORE</discharge_port>
  <transport mode="Sea">
    <craft>ECCLES THE BRAVE</craft>
    <conveyance_ref>4378</conveyance_ref>
  </transport>
  <product item="1">
    <description>WHEAT</description>
    <origin_source country="Australia" country_code="AU"/>
    <package level="1" package_type="BULK" type_code="VR" package_number="0">BULK</package>
    <weight type="NET" amount="1.000" unit="TNE" unit_name="TONNE (METRIC TON)">1.000 TONNE (METRIC TON)
NET</weight>
    <weight type="GROSS" amount="1200.000" unit="KGM" unit_name="kilogram">1200.000 kilogram GROSS</weight>
  </product>
  <approval type="Certificate Authentication">
    <declaration>
      <statement language="en">I hereby certify that to the best of my knowledge the conditions or restrictions applicable under the
particular inspection system prescribed in Regulations or Orders under the Export Control Act 1982 have been complied with in respect of the
prescribed goods described above, being goods that are: 1. In sound condition 2. Of Australian Origin</statement>
    </declaration>
    <name>Andy</name>
    <qualifications>Authorised Officer</qualifications>
    <role>Official Veterinarian</role>
    <date day="2" month="2" year="2005">2005-02-02</date>
  </approval>
</certificate>
</certificates>

```

The import authority would respond by sending the following **receipt** message to the export authority that sent the original message:

```

<?xml version="1.0" encoding="UTF-8"?>
<receipt no="1323297">
  <original_issue_date day="2" month="2" year="2005" hour="14" minute="35" second="51">2005-02-02 14:35:51</original_issue_date>
  <issue_date day="2" month="2" year="2005" hour="14" minute="40" second="29">2005-02-02 14:40:29</issue_date>
</receipt>

```

4.4.5 E-cert message flow

The following diagram shows the flow of messages between export and import authorities.

